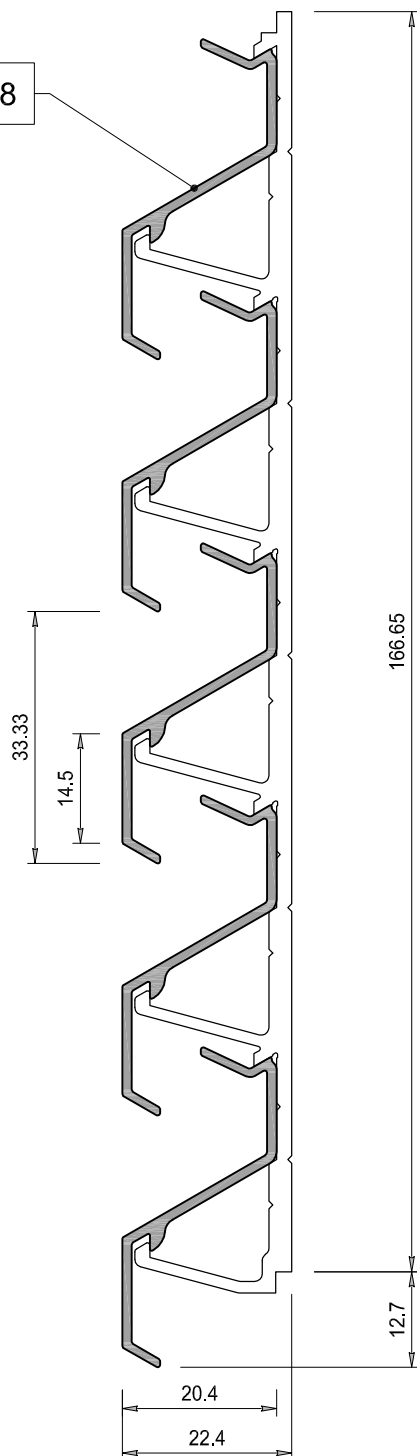
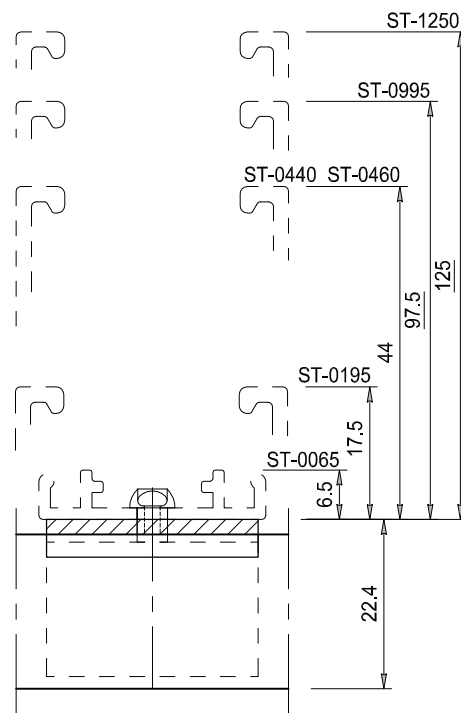


ST-033-08



DSN



BAZ

Lamelhouder wordt uitsluitend
toegepast met een dragerprofiel
Overzicht dragers op tek. ST-Dragers

Aluminium extrusie kwaliteit
EN AW 6063 T66

LAMEL TYPE: ST-033-08

Steek	33.33	mm
Diepte	20.4	mm
Hoogte	42.3	mm
K-factor	123.46	
Max. horizontale overspanning tussen twee dragers	950	mm
bij winddruk Q=800 Pa		
Visuele vrije doorlaat	56	%
Fysische vrije doorlaat	26	%

STORAX

Storax BV
Wattstraat 1
3335 LV Zwijndrecht
Nederland

Tel. : +31 (0)78 303 09 00
Fax : +31 (0)78 610 04 95
E-mail: storax@storax.nl
Website: www.storax.nl

Productgroep: Lamellenwand

Onderdeel :Lamel type ST-033-08

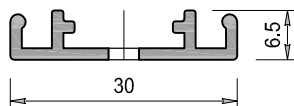
Materiaal :Aluminium

Schaal: 1:1

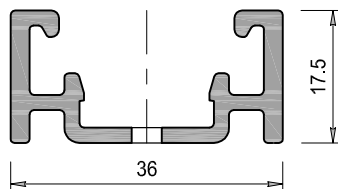
Datum: 01-06-2016

Blad:

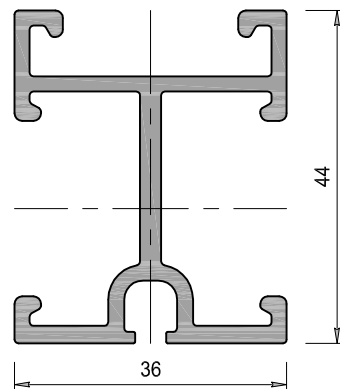
ST-033-08



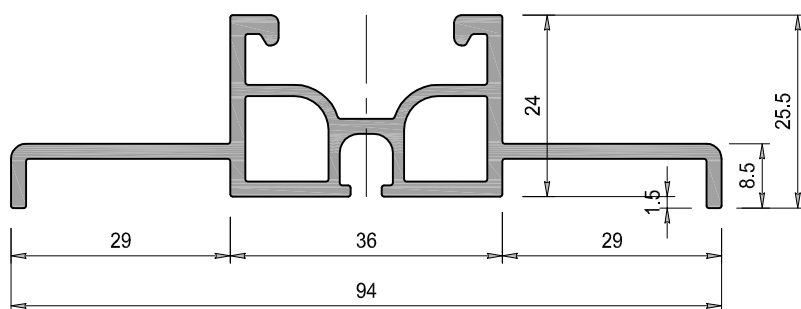
DRAAGPROFIEL TYPE: ST-0065	
Profiel diepte	6.5 mm
Profiel breedte	30 mm
Bevestiging	
h.o.h. maximaal	500 mm



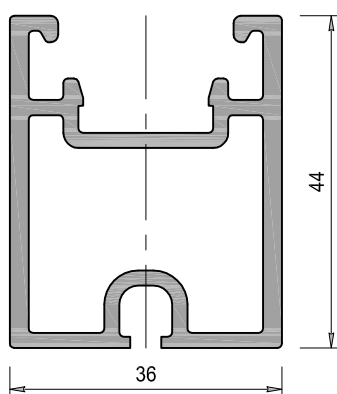
DRAAGPROFIEL TYPE: ST-0195	
Profiel diepte	17.5 mm
Profiel breedte	36 mm
Maximale verticale overspanning bij winddruk Q=800 Pa, ca.	600 mm



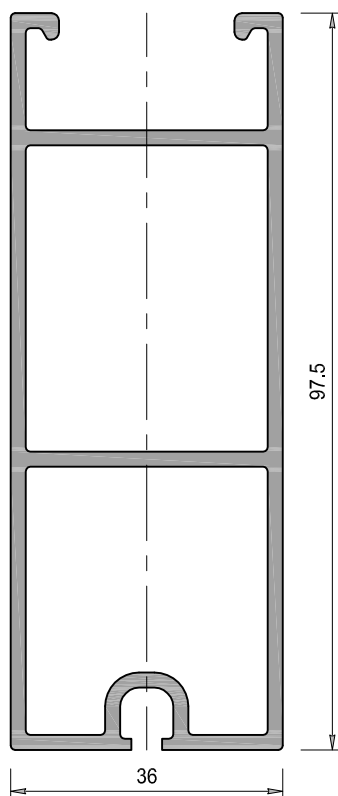
DRAAGPROFIEL TYPE: ST-0440	
Profiel diepte	44 mm
Profiel breedte	36 mm
Maximale verticale overspanning bij winddruk Q=800 Pa, ca.	1500 mm



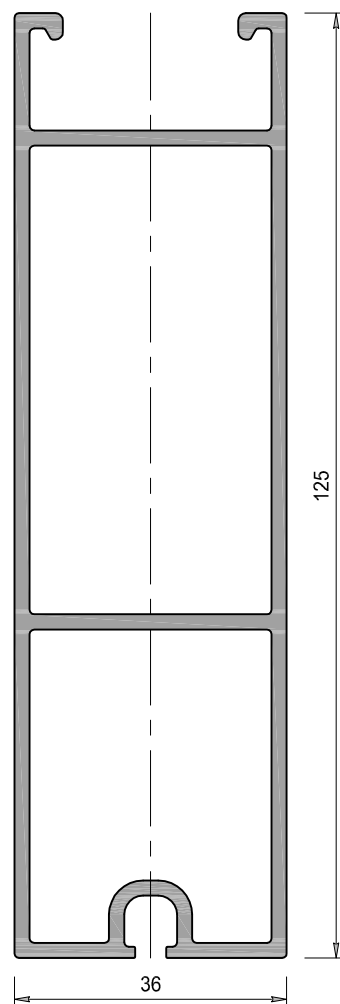
DRAAGPROFIEL TYPE: ST-0240	
Profiel diepte	25.5 mm
Profiel breedte	94 mm
Maximale verticale overspanning bij winddruk Q=800 Pa, ca.	1120 mm



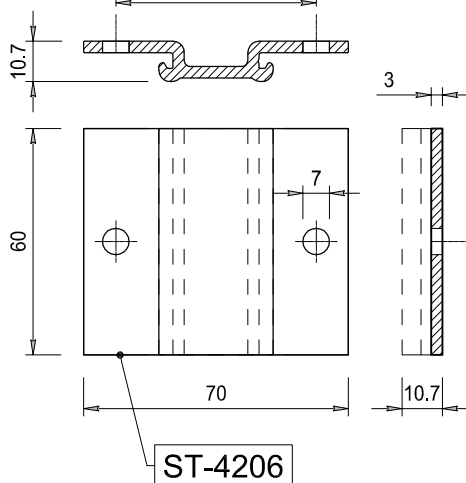
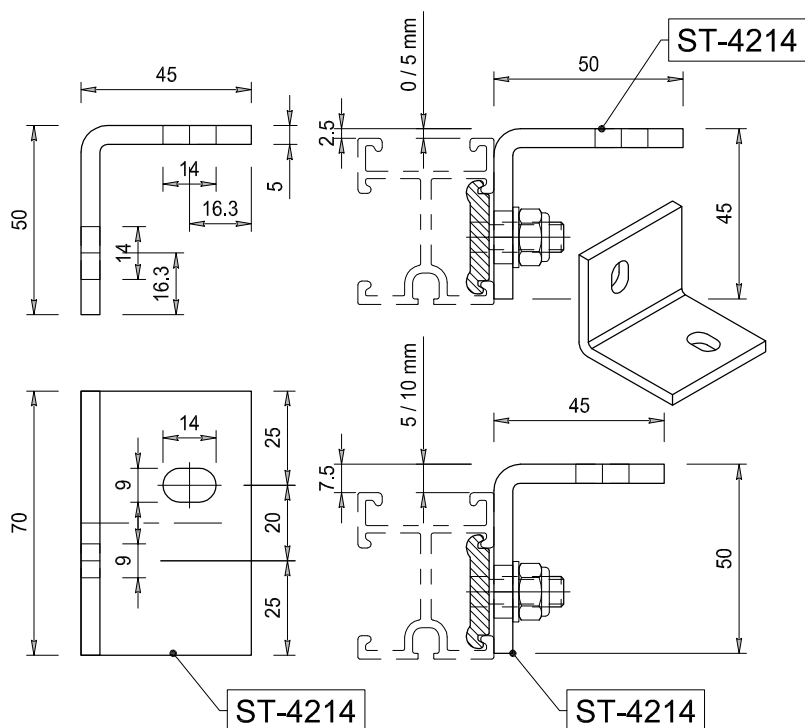
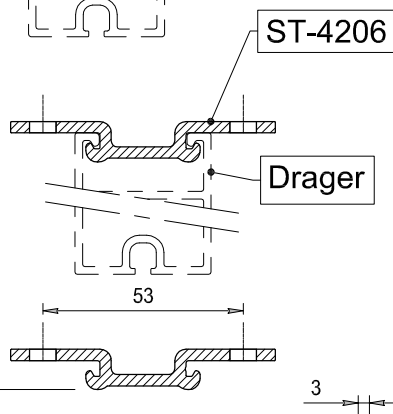
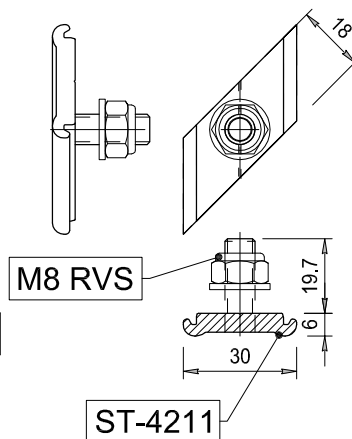
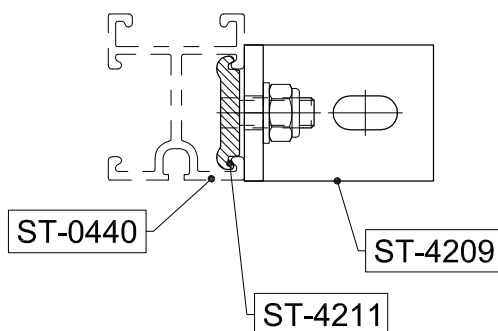
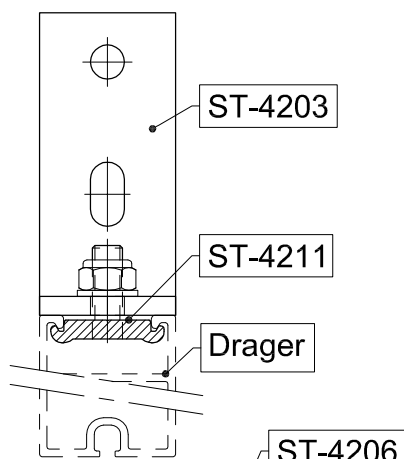
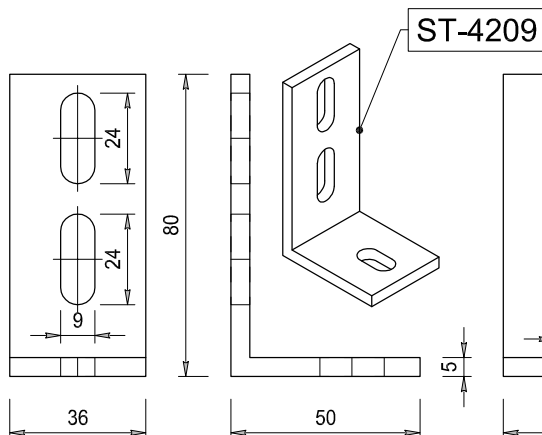
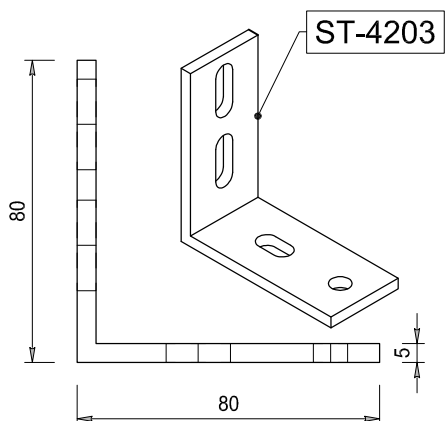
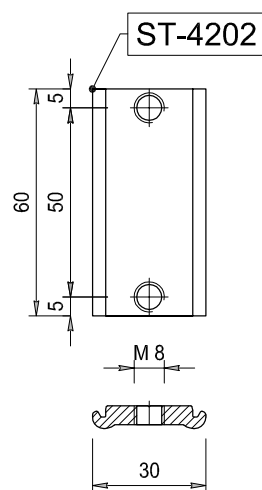
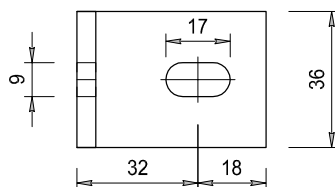
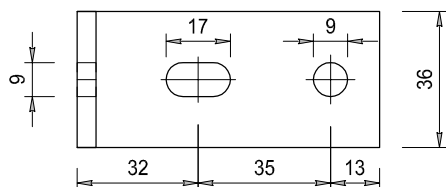
DRAAGPROFIEL TYPE: ST-0460	
Profiel diepte	44 mm
Profiel breedte	36 mm
Maximale verticale overspanning bij winddruk Q=800 Pa, ca.	1500 mm



DRAAGPROFIEL TYPE: ST-0995	
Profiel diepte	97.5 mm
Profiel breedte	36 mm
Maximale verticale overspanning bij winddruk Q=800 Pa, ca.	2800 mm



DRAAGPROFIEL TYPE: ST-1250	
Profiel diepte	125 mm
Profiel breedte	36 mm
Maximale verticale overspanning bij winddruk Q=800 Pa, ca.	3600 mm



STORAX

Storax BV
Wattstraat 1
3335 LV Zwijndrecht
Nederland

Tel. : +31 (0)78 303 09 00
Fax : +31 (0)78 610 04 95
E-mail: storax@storax.nl
Website: www.storax.nl

Productgroep: Lamellenwand

Onderdeel : Overzicht Bevestigings onderdelen

Materiaal : Aluminium / RVS

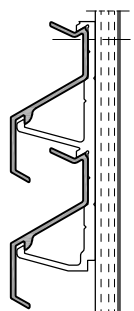
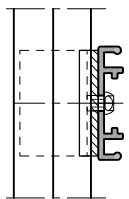
Schaal: 1:2

Datum: 01-06-2016

Blad:

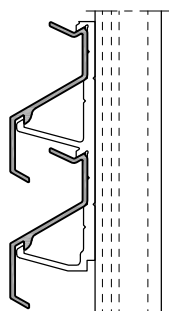
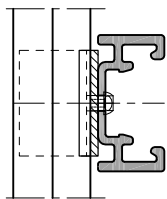
ST-Bevestiging

ST-033-08
ST-0065



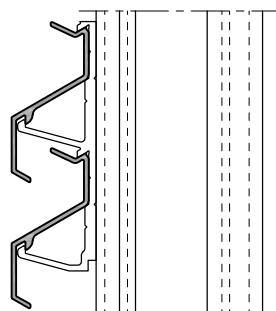
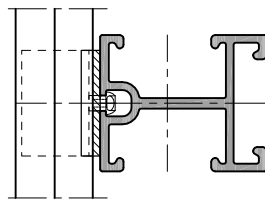
28.9

ST-033-08
ST-0195



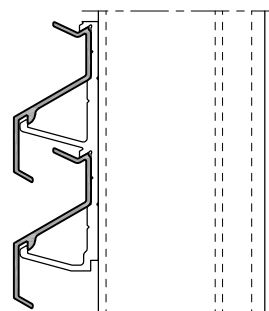
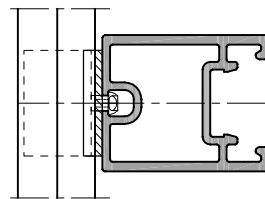
39.9

ST-033-08
ST-0440



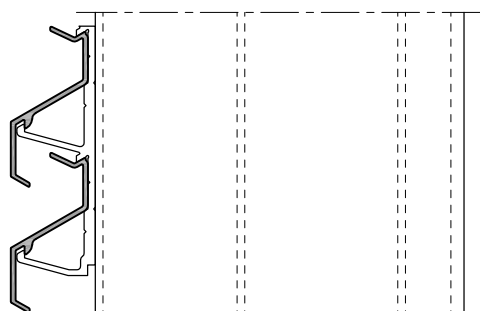
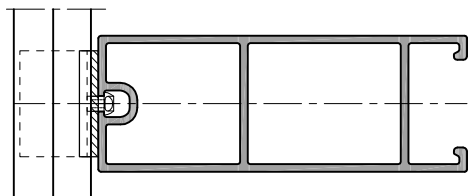
66.4

ST-033-08
ST-0460



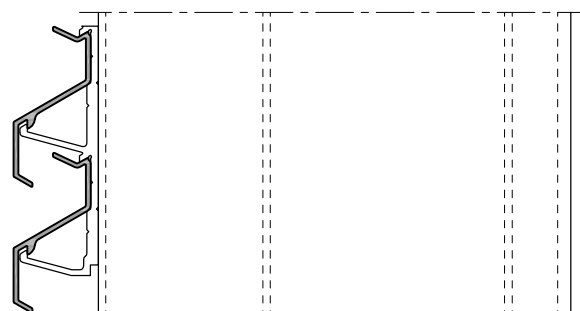
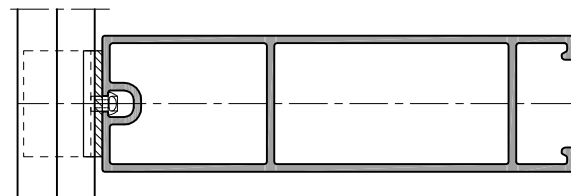
66.4

ST-033-08
ST-0995

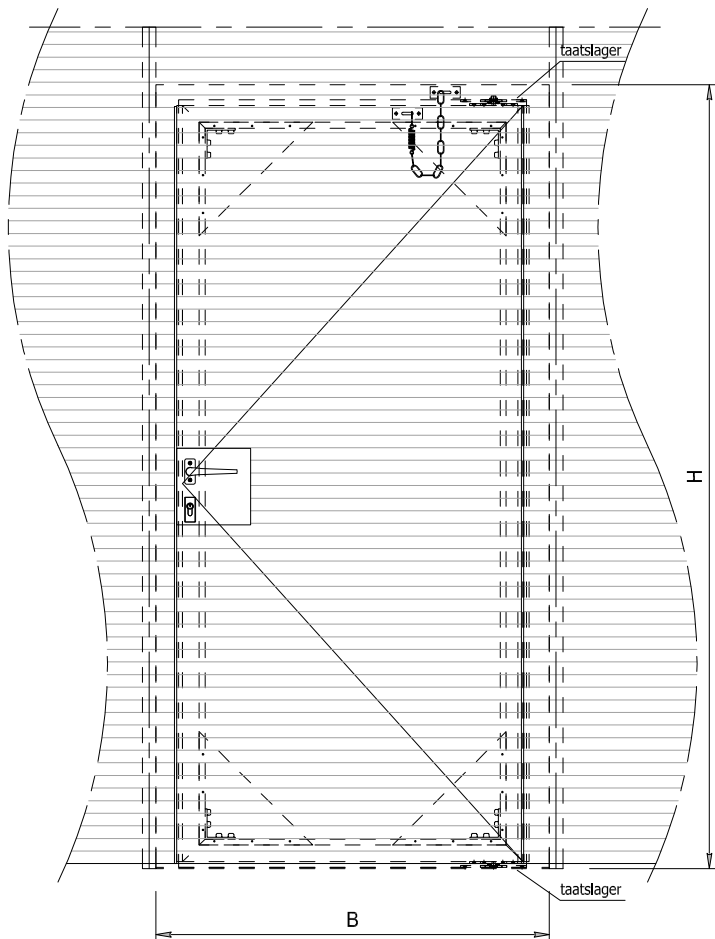


119.9

ST-033-08
ST-1250

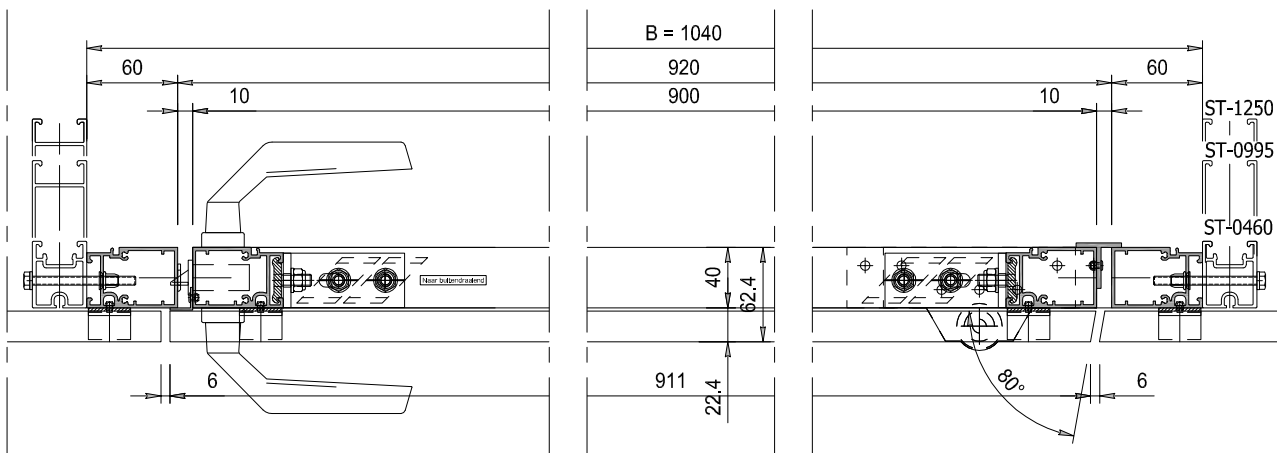
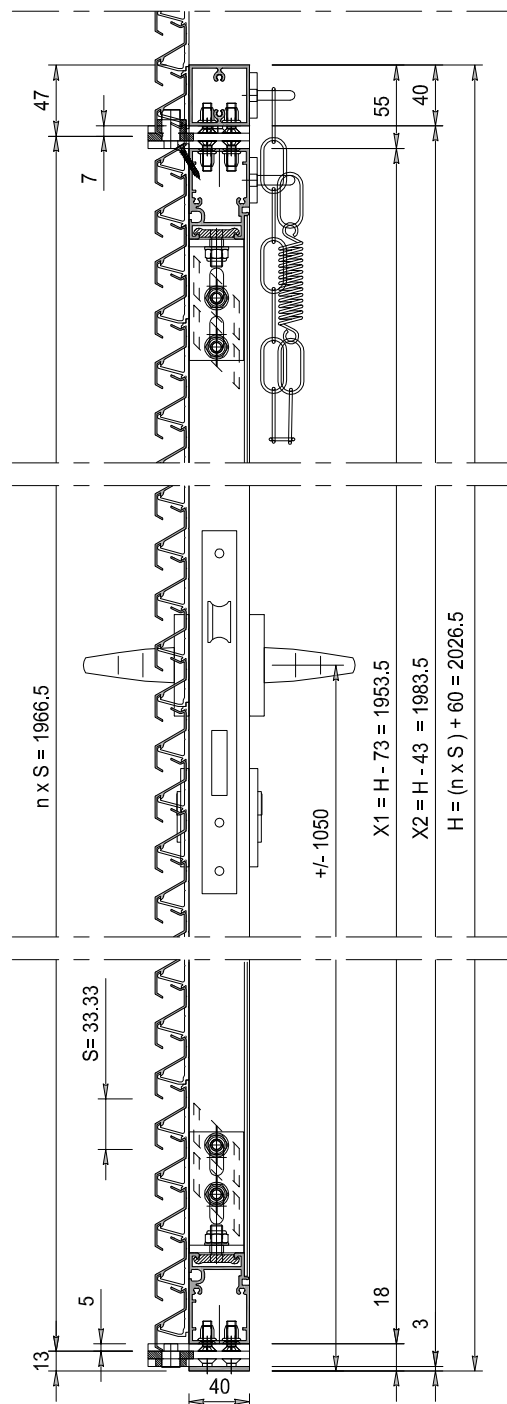


147.4



Legenda
H ; Hoogte totaal in mm
B ; Breedte totaal in mm
X1; Hoogte deurvleugel in mm
X2; Nuttige opening hoogte in mm
S ; Stap / Steek in mm
n ; aantal lamellen op de deur

(B=1500 mm maximaal)
(H=2700 mm maximaal)



STORAX

Storax BV
Wattstraat 1
3335 LV Zwijndrecht
Nederland

Tel. : +31 (0)78 303 09 00
Fax : +31 (0)78 610 04 95
E-mail: storax@storax.nl
Website: www.storax.nl

Productgroep: Lamellenwand

Onderdeel : Deur met lamel ST-033-08

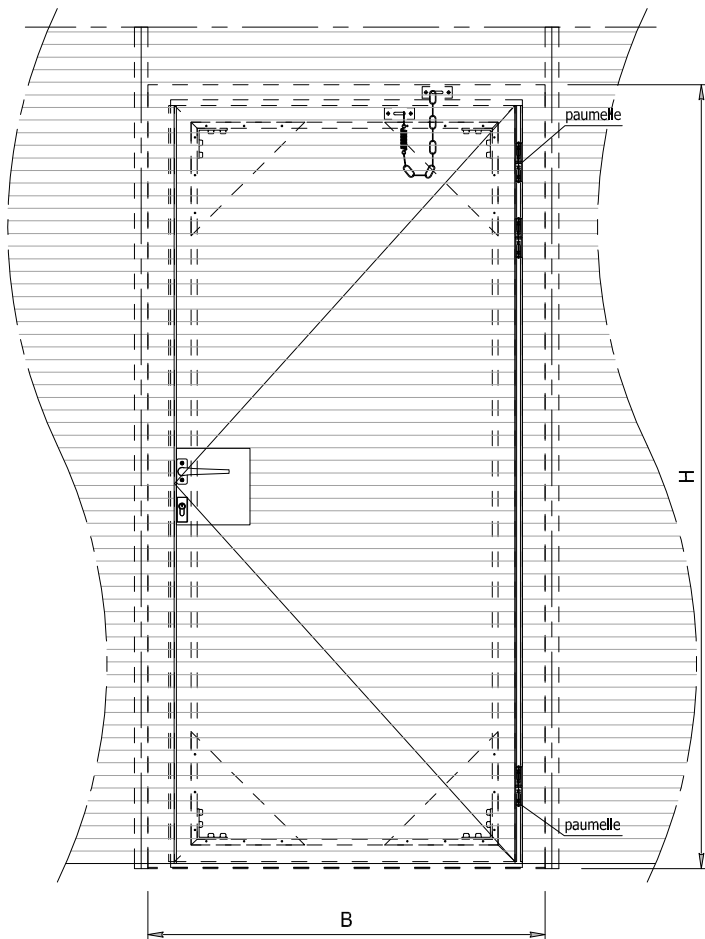
Materiaal : Aluminium

Schaal: 1:20 1:5

Datum: 01-06-2016

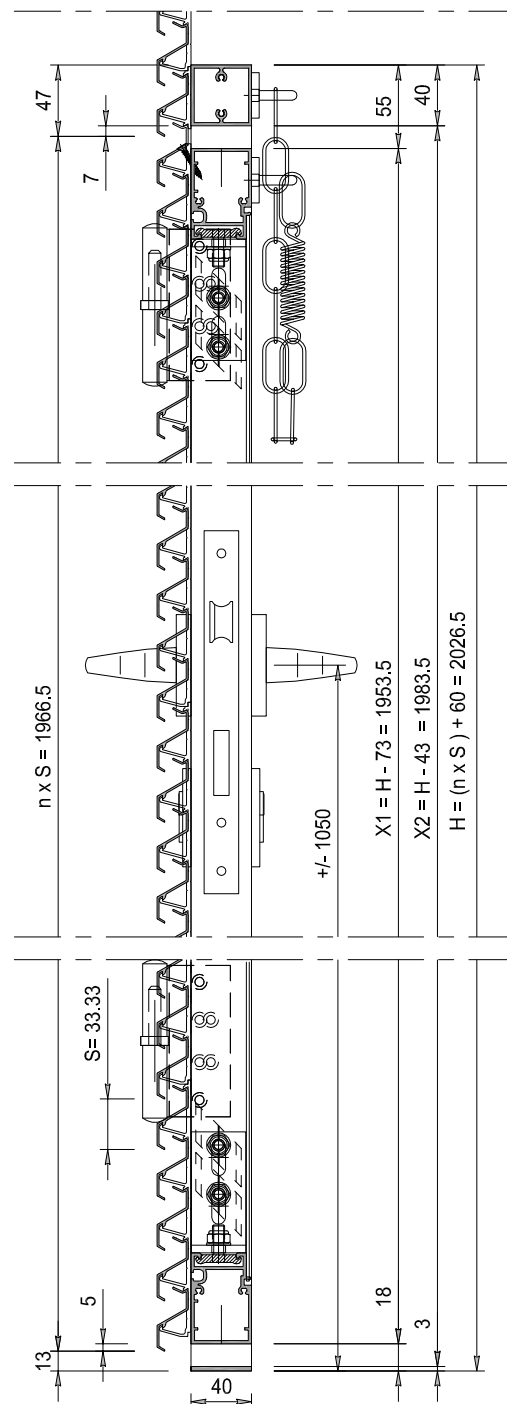
Blad:

D-033-08



Legenda
H ; Hoogte totaal in mm
B ; Breedte totaal in mm
X1; Hoogte deurvleugel in mm
X2; Nuttige opening hoogte in mm
S ; Stap / Steek in mm
n ; aantal lamellen op de deur

(B=1500 mm maximaal)
(H=2700 mm maximaal)



$n \times S = 1966.5$

$X1 = H - 73 = 1953.5$
 $X2 = H - 43 = 1983.5$
 $H = (n \times S) + 60 = 2026.5$

$S = 33.33$

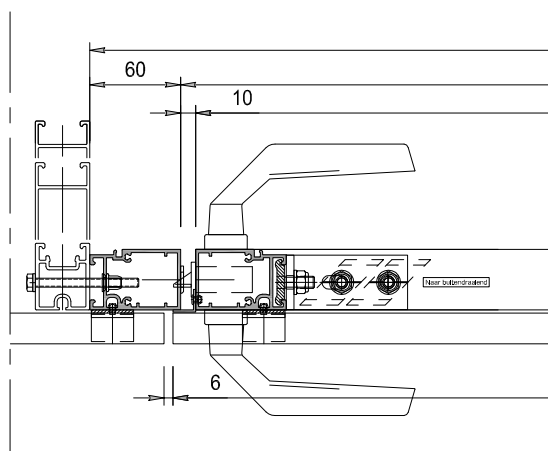
13

5

40

18

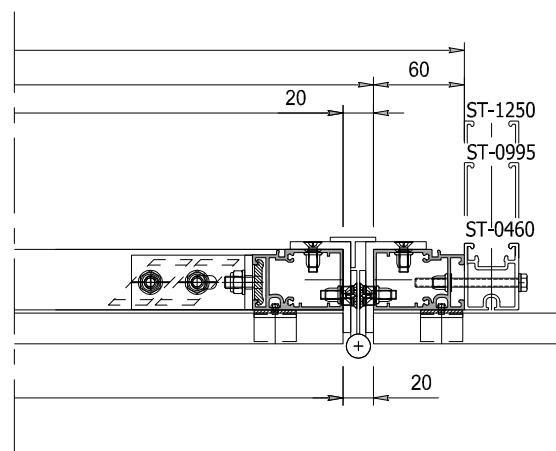
3



B = 1050

930
900

40
62.4
915
22.4



ST-1250

ST-0995

ST-0460

STORAX

Storax BV
Wattstraat 1
3335 LV Zwijndrecht
Nederland

Tel. : +31 (0)78 303 09 00
Fax : +31 (0)78 610 04 95
E-mail: storax@storax.nl
Website: www.storax.nl

Productgroep: Lamellenwand

Onderdeel : Deur met lamel ST-033-08

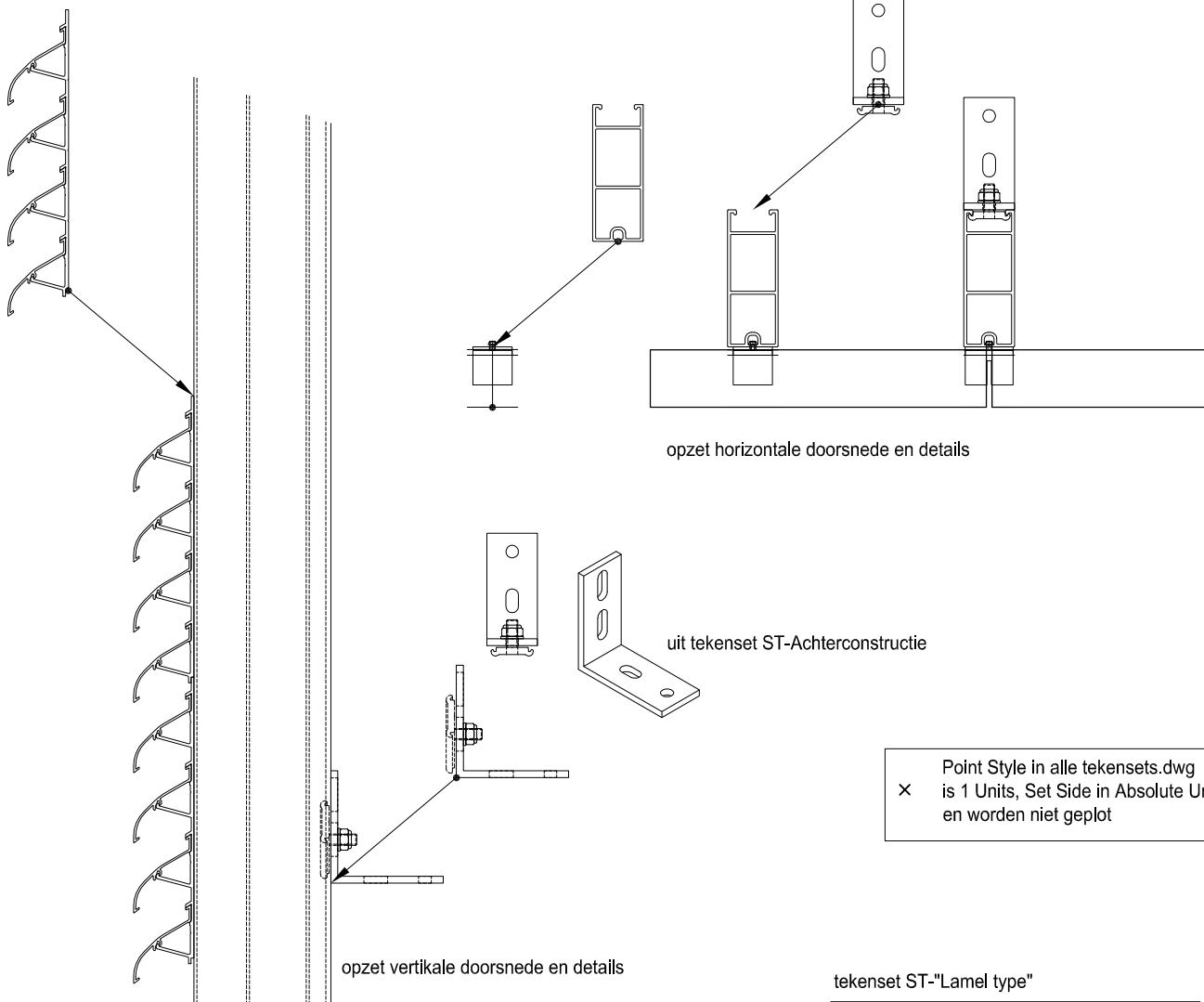
Materiaal : Aluminium

Schaal: 1:20 1:5

Datum: 01-06-2016

Blad:

D-033-08'



opzet horizontale doorsnede en details

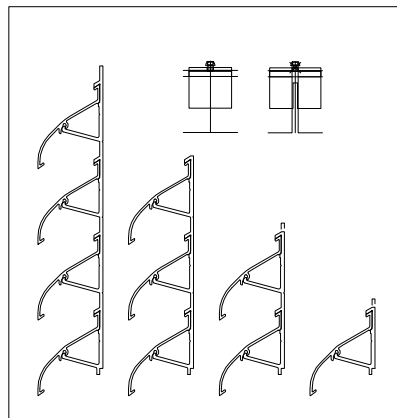
uit tekenset ST-Achterconstructie

opzet verticale doorsnede en details

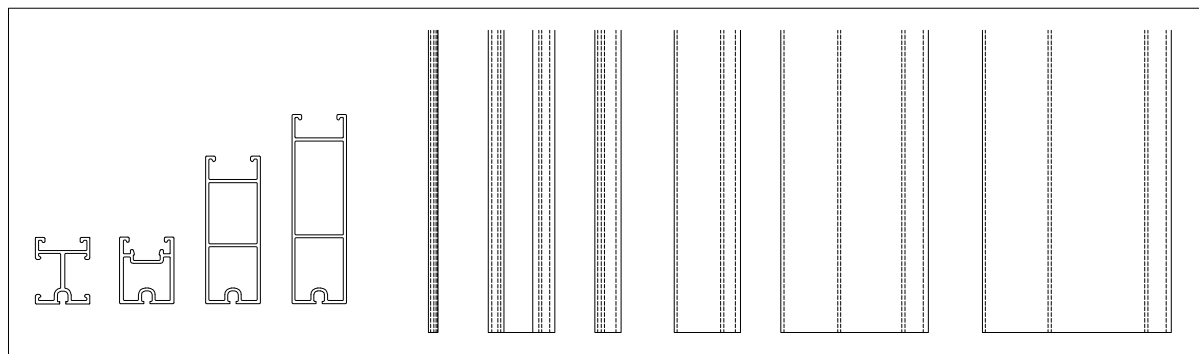
× Point Style in alle tekensets.dwg is 1 Units, Set Side in Absolute Units en worden niet geplot

Zie ook;
Overzicht lamellen, zie tekening 01 en 02
Overzicht dragers, deur en cassettekaders tek.03
Overzicht bevestigings onderdelen, zie tekening 04
Deuren in lamellenwand, zie tekening 05 t/m 11
Cassettesysteem details, zie tekening 12

tekenset ST-"Lamel type"



tekenset ST-DRAAGPROFIEL



tekensets zijn in DWG formaat te downloaden



Storax BV
Wattstraat 1
3335 LV Zwijndrecht
Nederland

Tel. : +31 (0)78 303 09 00
Fax : +31 (0)78 610 04 95
E-mail: storax@storax.nl
Website: www.storax.nl

Productgroep: Lamellenwand

Onderdeel : Instructie gebruik tekensets in dwg

Materiaal : -

Schaal: -

Datum: 01-06-2016

Blad:

Instructie