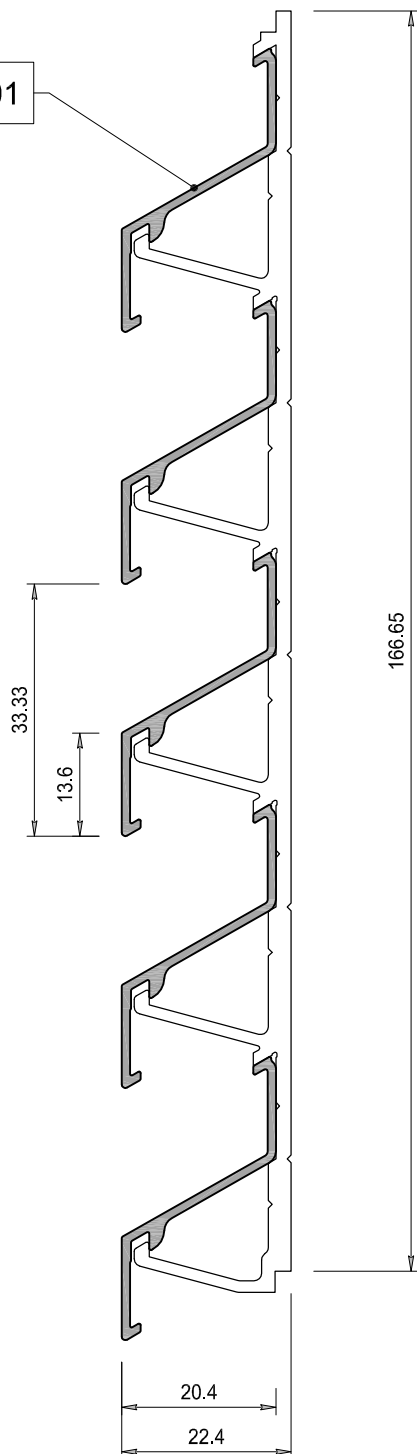
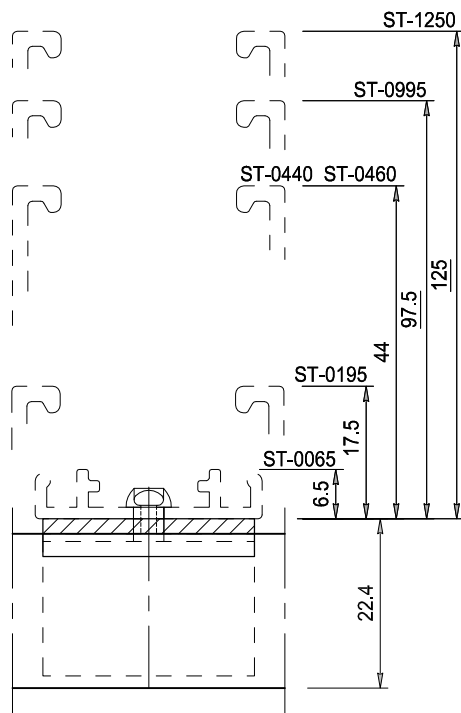


ST-033-01



DSN



BAZ

Lamelhouder wordt uitsluitend  
toegepast met een dragerprofiel  
Overzicht dragers op tek. ST-Dragers

Aluminium extrusie kwaliteit  
EN AW 6063 T66

LAMEL TYPE: ST-033-01

Steek	33.33	mm
Diepte	20.4	mm
Hoogte	37.5	mm
K-factor	22.68	
Max. horizontale overspanning tussen twee dragers	800	mm
bij winddruk Q=800 Pa		
Visuele vrije doorlaat	59	%
Fysische vrije doorlaat	44.7	%

**STORAX**

Storax BV  
Wattstraat 1  
3335 LV Zwijndrecht  
Nederland

Tel. : +31 (0)78 303 09 00  
Fax : +31 (0)78 610 04 95  
E-mail: storax@storax.nl  
Website: www.storax.nl

Productgroep: Lamellenwand

Onderdeel : Lamel type ST-033-01

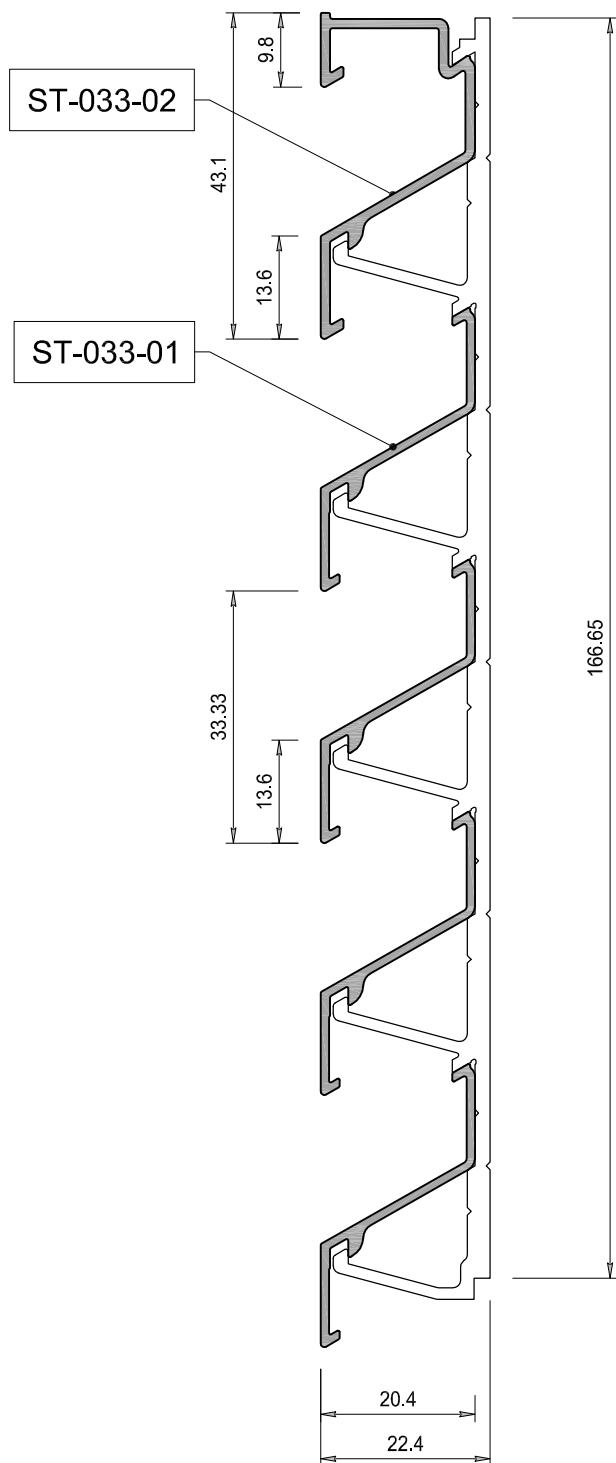
Materiaal : Aluminium

Schaal: 1:1

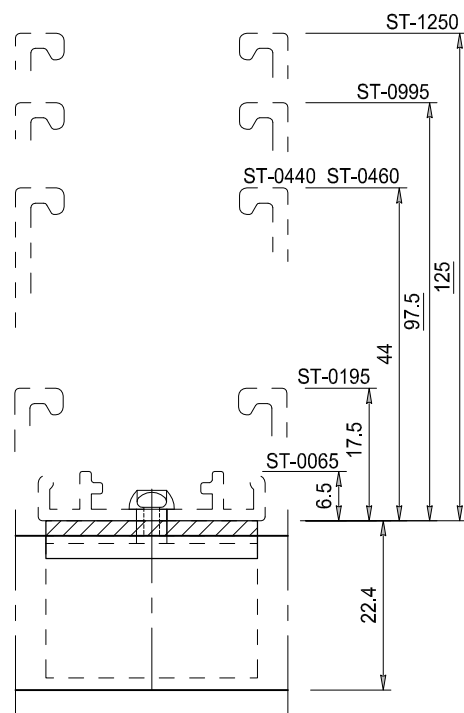
Datum: 01-06-2016

Blad:

**ST-033-01**



DSN



BAZ

Lamelhouder wordt uitsluitend  
toegepast met een dragerprofiel  
Overzicht dragers op tek. ST-Dragers

Aluminium extrusie kwaliteit  
EN AW 6063 T66

LAMEL TYPE: ST-033-01

Steek	33.33	mm
Diepte	20.4	mm
Hoogte	37.5	mm
K-factor	22.68	
Max. horizontale overspanning tussen twee dragers	800	mm
bij winddruk Q=800 Pa		
Visuele vrije doorlaat	59	%
Fysische vrije doorlaat	44.7	%

**STORAX**

Storax BV  
Wattstraat 1  
3335 LV Zwijndrecht  
Nederland

Tel. : +31 (0)78 303 09 00  
Fax : +31 (0)78 610 04 95  
E-mail: storax@storax.nl  
Website: www.storax.nl

Productgroep: Lamellenwand

Onderdeel : Lamel type ST-033-02 bovenlamel

Materiaal : Aluminium

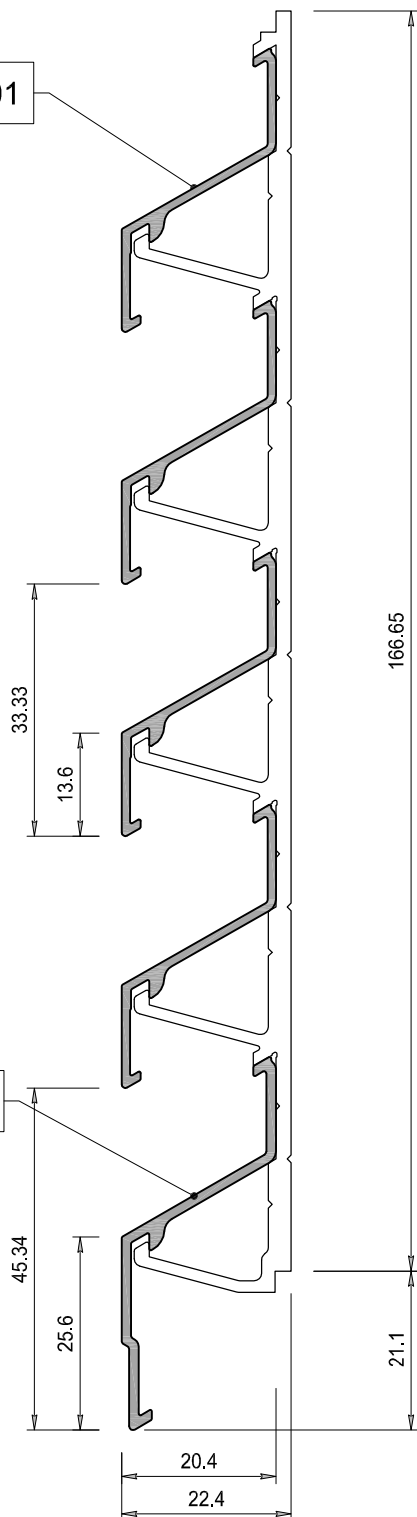
Schaal: 1:1

Datum: 01-06-2016

Blad:

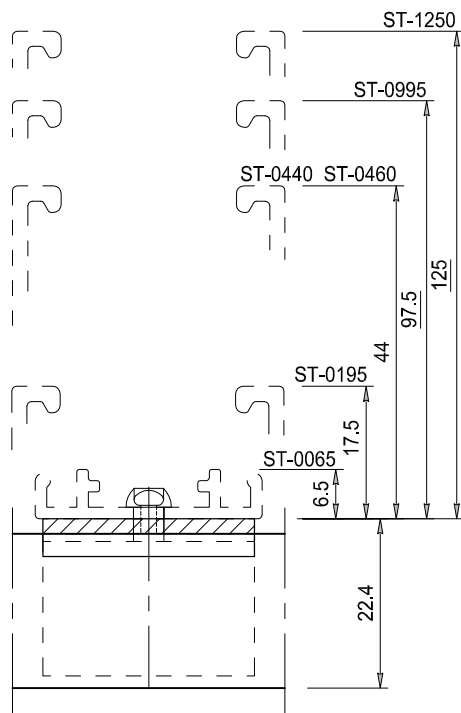
**ST-033-02**

ST-033-01



ST-033-03

DSN



BAZ

Lamelhouder wordt uitsluitend  
toegepast met een dragerprofiel  
Overzicht dragers op tek. ST-Dragers

Aluminium extrusie kwaliteit  
EN AW 6063 T66

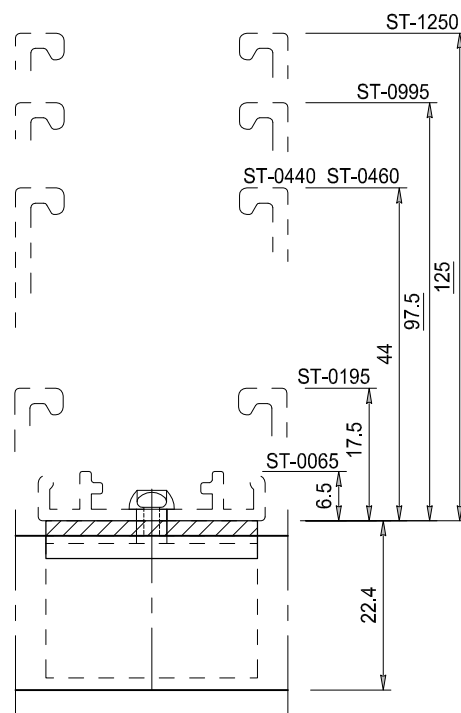
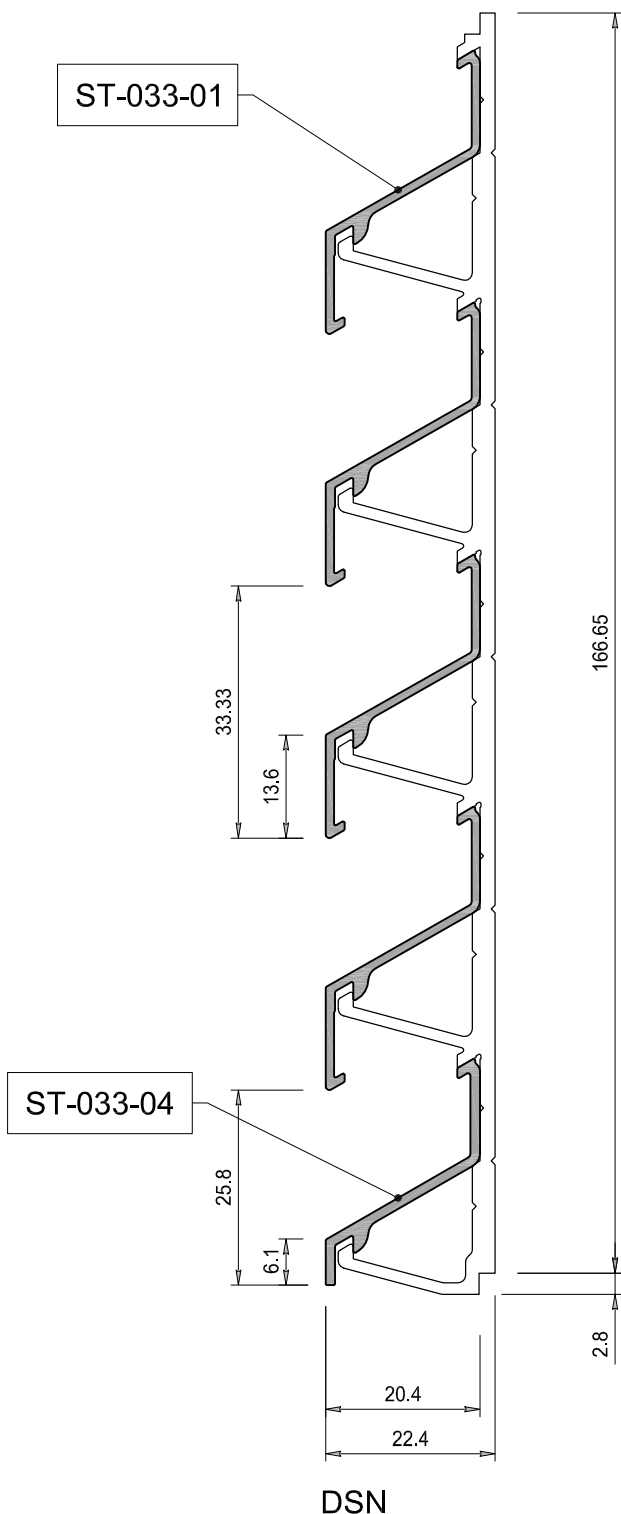
LAMEL TYPE: ST-033-01	
Steek	33.33 mm
Diepte	20.4 mm
Hoogte	37.5 mm
K-factor	22.68
Max. horizontale overspanning tussen twee dragers	800 mm
bij winddruk Q=800 Pa	
Visuele vrije doorlaat	59 %
Fysische vrije doorlaat	44.7 %

**STORAX**

Storax BV  
Wattstraat 1  
3335 LV Zwijndrecht  
Nederland

Tel. : +31 (0)78 303 09 00  
Fax : +31 (0)78 610 04 95  
E-mail: storax@storax.nl  
Website: www.storax.nl

Productgroep: Lamellenwand	
Onderdeel : Lamel type ST-033-03 onderlamel	
Materiaal : Aluminium	
Schaal: 1:1	Blad:
Datum: 01-06-2016	<b>ST-033-03</b>



Lamelhouder wordt uitsluitend  
toegepast met een dragerprofiel  
Overzicht dragers op tek. ST-Dragers

Aluminium extrusie kwaliteit  
EN AW 6063 T66

LAMEL TYPE: ST-033-01

Steek	33.33	mm
Diepte	20.4	mm
Hoogte	37.5	mm
K-factor	22.68	
Max. horizontale overspanning tussen twee dragers	800	mm
bij winddruk Q=800 Pa		
Visuele vrije doorlaat	59	%
Fysische vrije doorlaat	44.7	%

**STORAX**

Storax BV  
Wattstraat 1  
3335 LV Zwijndrecht  
Nederland

Tel. : +31 (0)78 303 09 00  
Fax : +31 (0)78 610 04 95  
E-mail: storax@storax.nl  
Website: www.storax.nl

Productgroep: Lamellenwand

Onderdeel : Lamel type ST-033-04 onderlamel

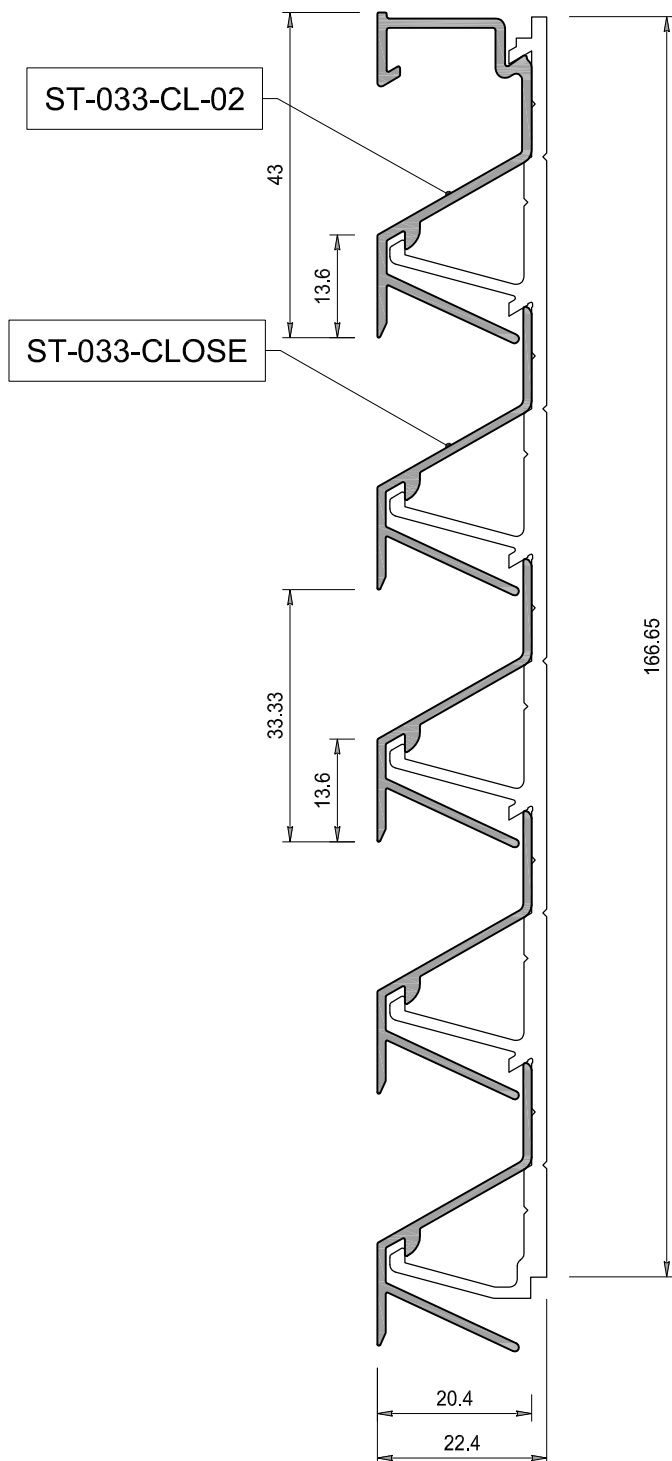
Materiaal : Aluminium

Schaal: 1:1

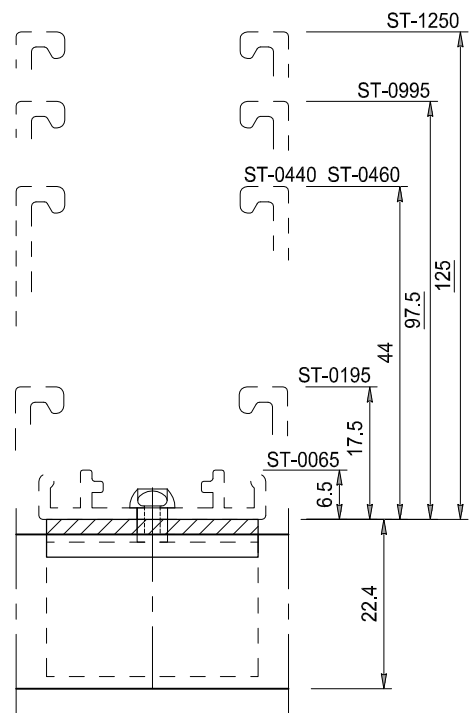
Datum: 01-06-2016

Blad:

**ST-033-04**



DSN



BAZ

Lamelhouder wordt uitsluitend  
toegepast met een dragerprofiel  
Overzicht dragers op tek. ST-Dragers

Aluminium extrusie kwaliteit  
EN AW 6063 T66

LAMEL TYPE: ST-033-CLOSE

Steek	33.33	mm
Diepte	20.4	mm
Hoogte	38.2	mm
K-factor	-	
Max. horizontale overspanning tussen twee dragers	1400	mm
bij winddruk Q=800 Pa		
Visuele vrije doorlaat	59	%
Fysische vrije doorlaat	-	%

**STORAX**

Storax BV  
Wattstraat 1  
3335 LV Zwijndrecht  
Nederland

Tel. : +31 (0)78 303 09 00  
Fax : +31 (0)78 610 04 95  
E-mail: storax@storax.nl  
Website: www.storax.nl

Productgroep: Lamellenwand

Onderdeel : Lamel type ST-033-CL-02 Bovenlamel

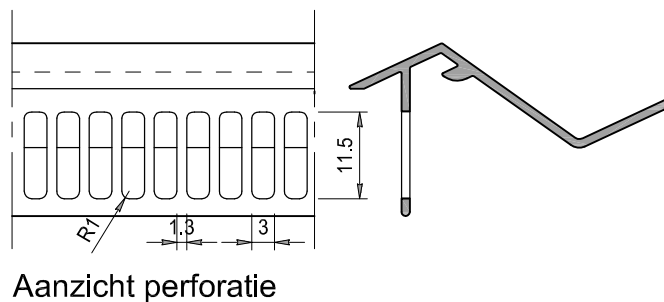
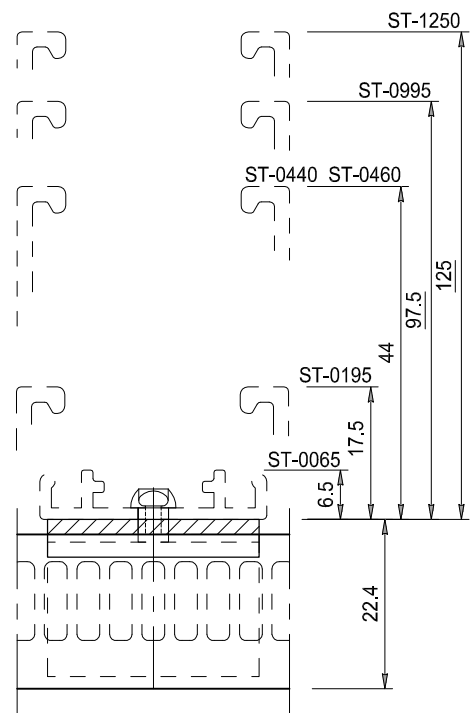
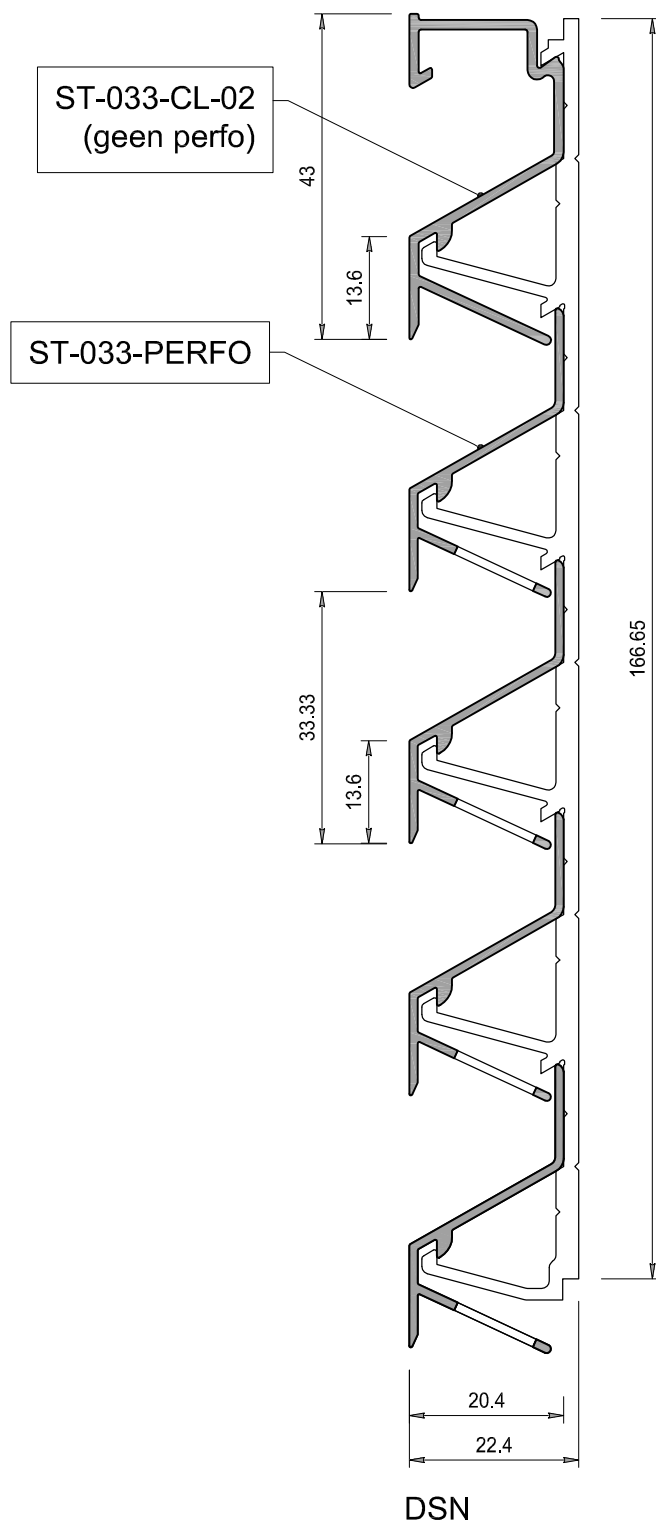
Materiaal : Aluminium

Schaal: 1:1

Datum: 01-10-2016

Blad:

ST-033-CL-02 a



Lamelhouder wordt uitsluitend  
toegepast met een dragerprofiel  
Overzicht dragers op tek. ST-Dragers

Aluminium extrusie kwaliteit  
EN AW 6063 T66

LAMEL TYPE: ST-033-PERFO

Steek	33	mm
Diepte	20.4	mm
Hoogte	38.2	mm
K-factor	34.7	
Max. horizontale overspanning tussen twee dragers	1400	mm
bij winddruk Q=800 Pa		
Visuele vrije doorlaat	59	%
Fysische vrije doorlaat	24	%

**STORAX**

Storax BV  
Wattstraat 1  
3335 LV Zwijndrecht  
Nederland

Tel. : +31 (0)78 303 09 00  
Fax : +31 (0)78 610 04 95  
E-mail: storax@storax.nl  
Website: www.storax.nl

Productgroep: Lamellenwand

Onderdeel : Lamel type ST-033-CL-02 Bovenlamel

Materiaal : Aluminium

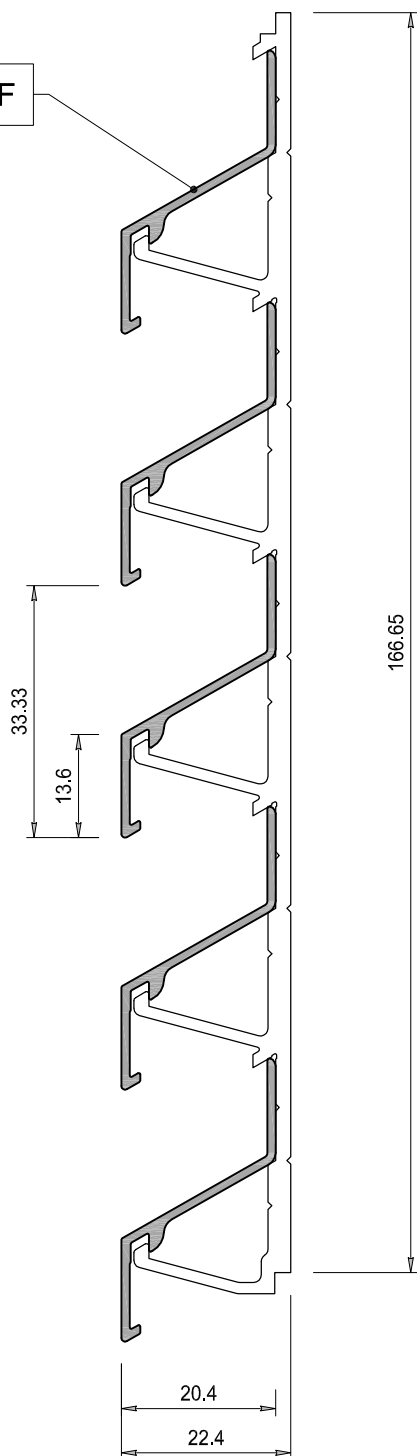
Schaal: 1:1

Datum: 01-10-2016

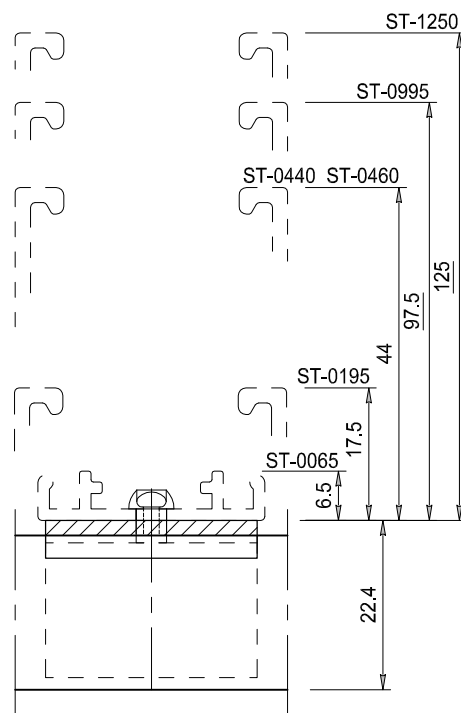
Blad:

ST-033-CL-02 b

ST-033-HF



DSN



BAZ

Lamelhouder wordt uitsluitend  
toegepast met een dragerprofiel  
Overzicht dragers op tek. ST-Dragers

Aluminium extrusie kwaliteit  
EN AW 6063 T66

LAMEL TYPE: ST-033-HF

Steek	33.33	mm
Diepte	20.4	mm
Hoogte	37.5	mm
K-factor	22.46	
Max. horizontale overspanning tussen twee dragers	800	mm
bij winddruk Q=800 Pa		
Visuele vrije doorlaat	59	%
Fysische vrije doorlaat	50	%

**STORAX**

Storax BV  
Wattstraat 1  
3335 LV Zwijndrecht  
Nederland

Tel. : +31 (0)78 303 09 00  
Fax : +31 (0)78 610 04 95  
E-mail: storax@storax.nl  
Website: www.storax.nl

Productgroep: Lamellenwand

Onderdeel : Lamel type ST-033-HF

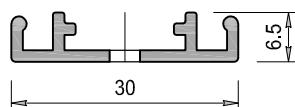
Materiaal : Aluminium

Schaal: 1:1

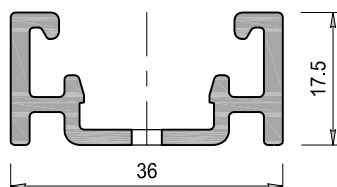
Datum: 01-06-2016

Blad:

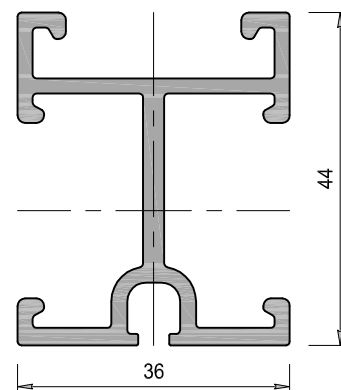
**ST-033-HF**



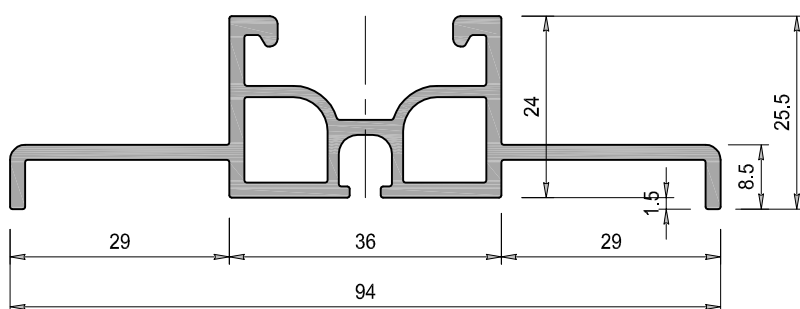
DRAAGPROFIEL TYPE: ST-0065	
Profiel diepte	6.5 mm
Profiel breedte	30 mm
Bevestiging	
h.o.h. maximaal	500 mm



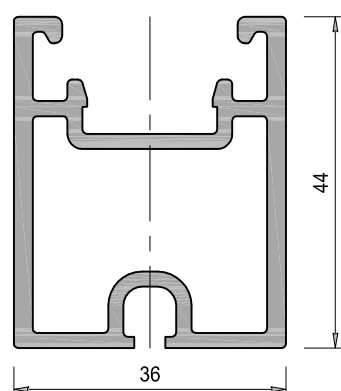
DRAAGPROFIEL TYPE: ST-0195	
Profiel diepte	17.5 mm
Profiel breedte	36 mm
Maximale verticale overspanning bij winddruk Q=800 Pa, ca.	600 mm



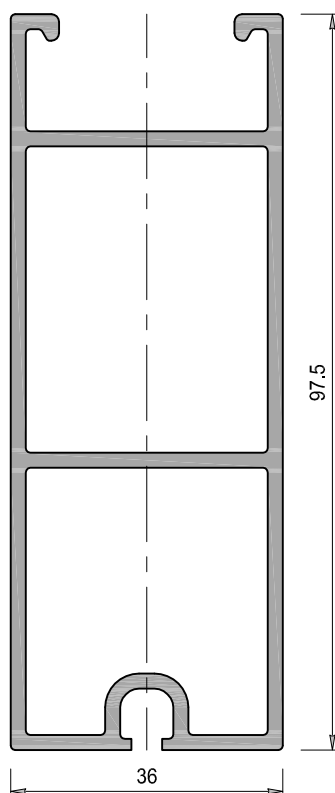
DRAAGPROFIEL TYPE: ST-0440	
Profiel diepte	44 mm
Profiel breedte	36 mm
Maximale verticale overspanning bij winddruk Q=800 Pa, ca.	1500 mm



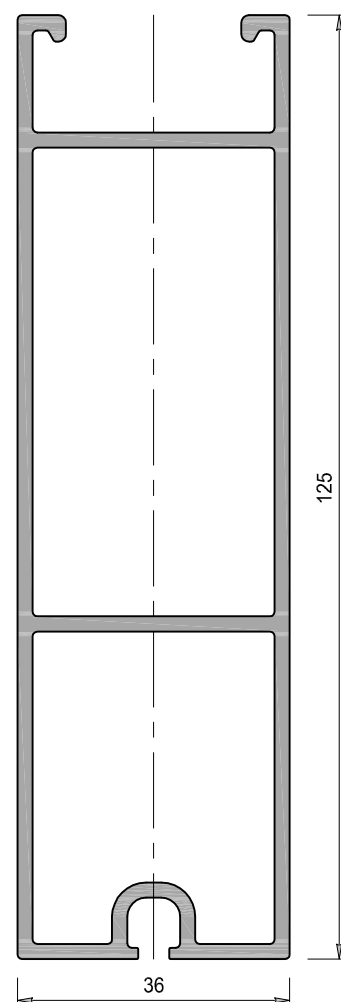
DRAAGPROFIEL TYPE: ST-0240	
Profiel diepte	25.5 mm
Profiel breedte	94 mm
Maximale verticale overspanning bij winddruk Q=800 Pa, ca.	1120 mm



DRAAGPROFIEL TYPE: ST-0460	
Profiel diepte	44 mm
Profiel breedte	36 mm
Maximale verticale overspanning bij winddruk Q=800 Pa, ca.	1500 mm

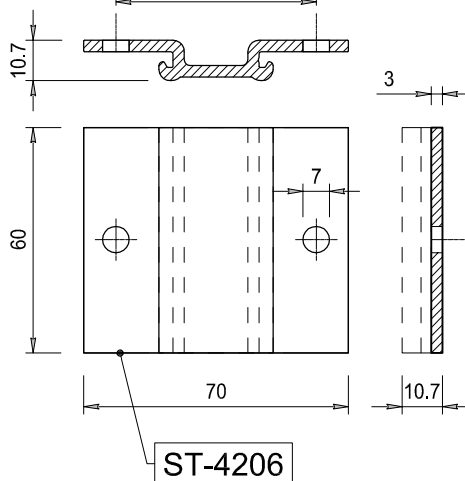
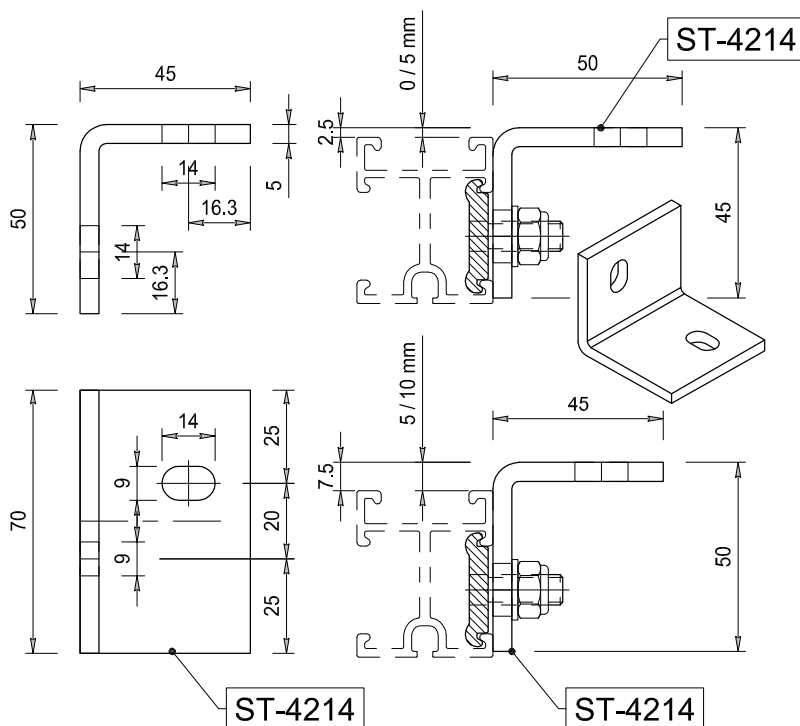
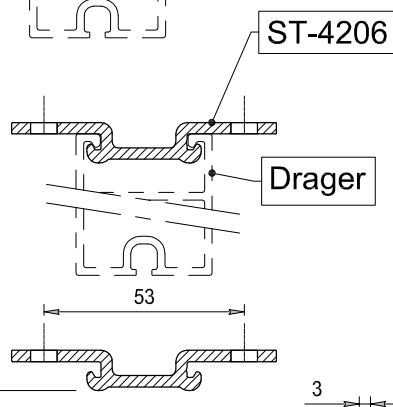
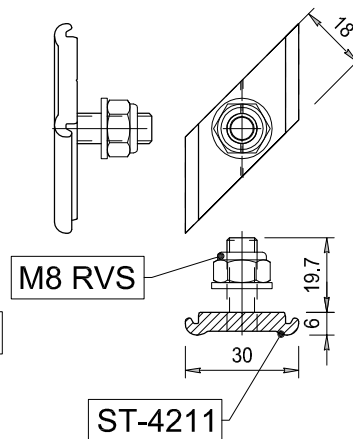
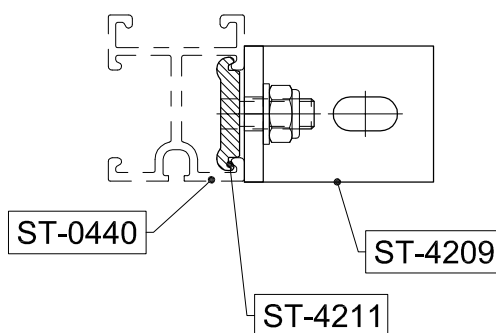
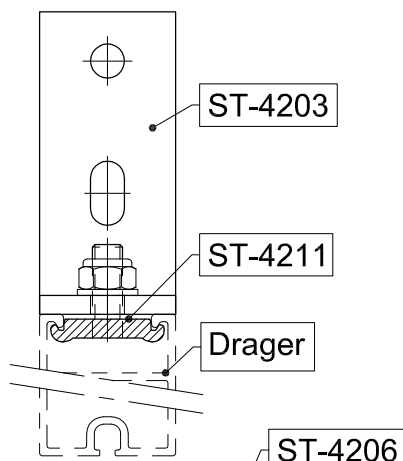
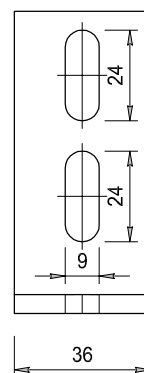
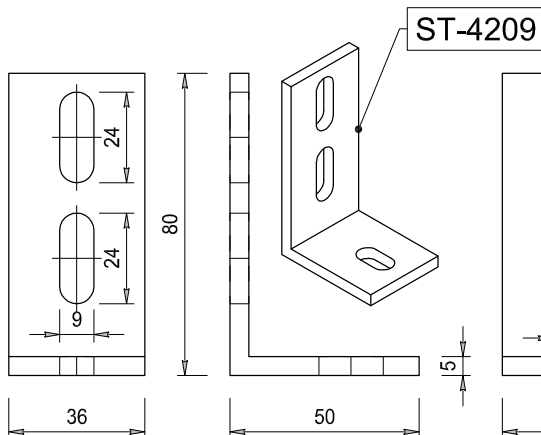
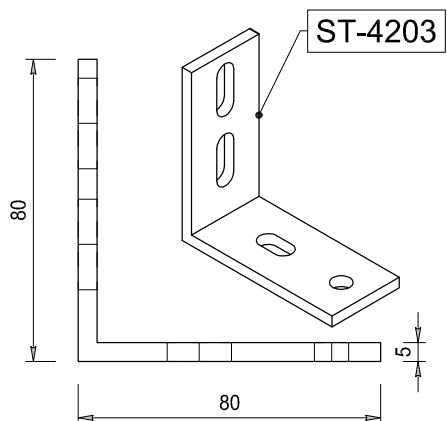
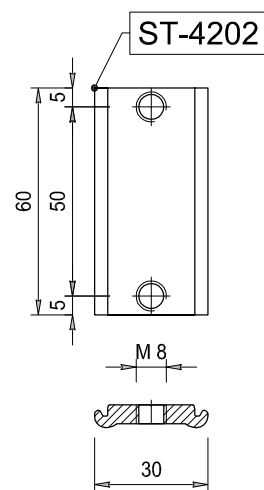
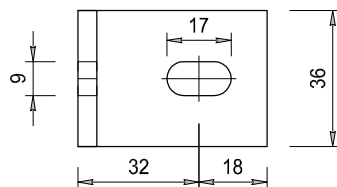
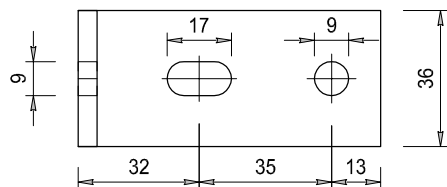


DRAAGPROFIEL TYPE: ST-0995	
Profiel diepte	97.5 mm
Profiel breedte	36 mm
Maximale verticale overspanning bij winddruk Q=800 Pa, ca.	2800 mm



DRAAGPROFIEL TYPE: ST-1250	
Profiel diepte	125 mm
Profiel breedte	36 mm
Maximale verticale overspanning bij winddruk Q=800 Pa, ca.	3600 mm





**STORAX**

Storax BV  
Wattstraat 1  
3335 LV Zwijndrecht  
Nederland

Tel. : +31 (0)78 303 09 00  
Fax : +31 (0)78 610 04 95  
E-mail: storax@storax.nl  
Website: www.storax.nl

Productgroep: Lamellenwand

Onderdeel : Overzicht Bevestigings onderdelen

Materiaal : Aluminium / RVS

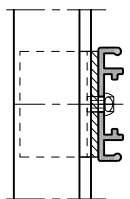
Schaal: 1:2

Datum: 01-06-2016

Blad:

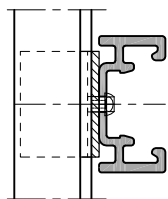
**ST-Bevestiging**

ST-033-01  
ST-0065



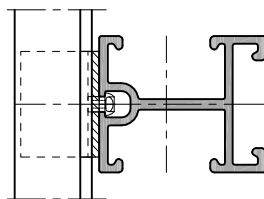
28.9

ST-033-01  
ST-0195



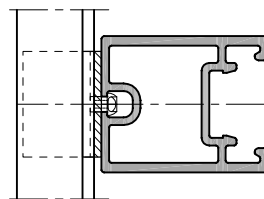
39.9

ST-033-01  
ST-0440

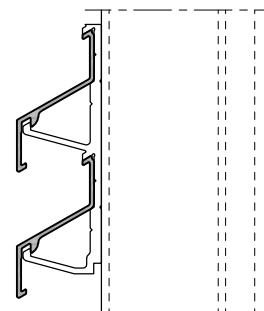
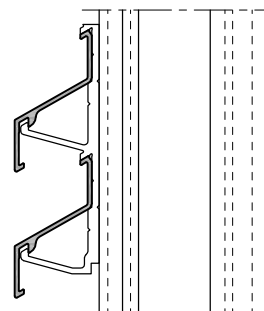
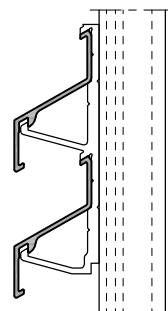
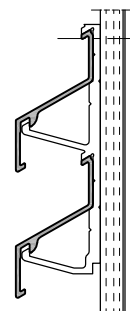


66.4

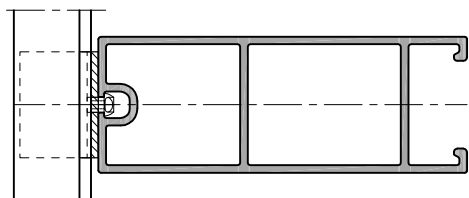
ST-033-01  
ST-0460



66.4

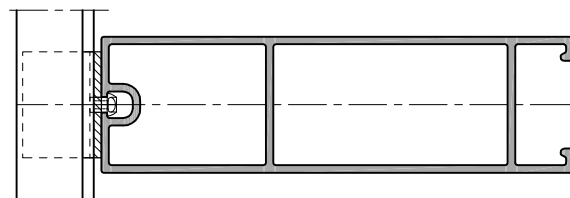


ST-033-01  
ST-0995

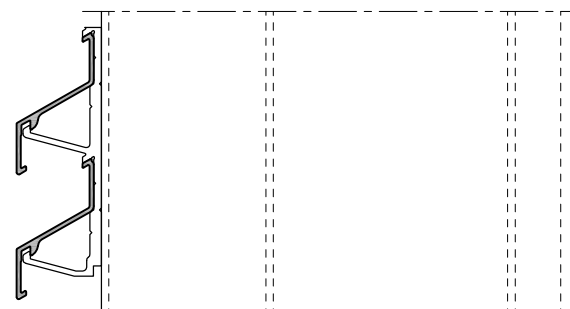
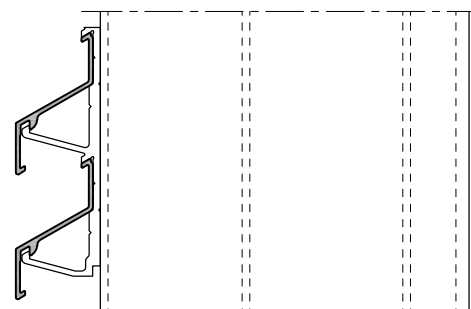


119.9

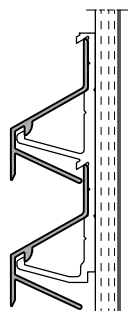
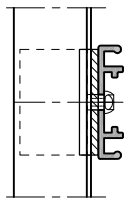
ST-033-01  
ST-1250



147.4

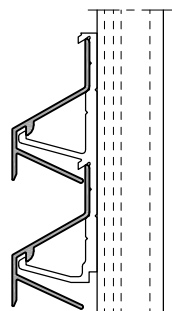
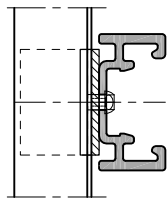


ST-033-CLOSE  
ST-0065



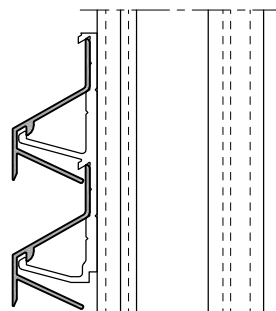
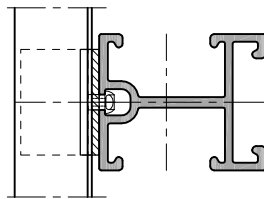
28.9

ST-033-CLOSE  
ST-0195



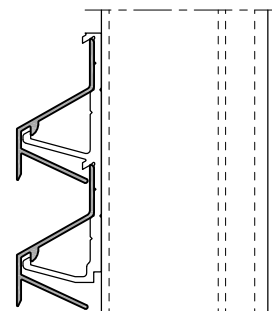
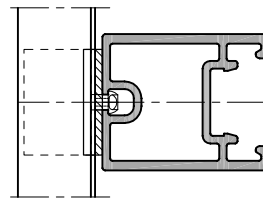
39.9

ST-033-CLOSE  
ST-0440



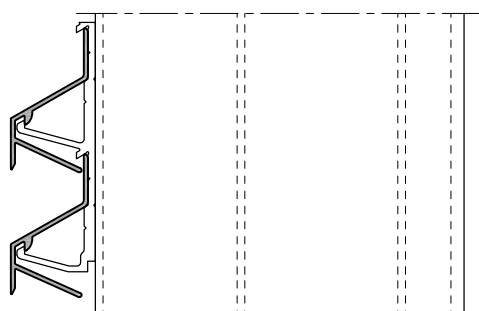
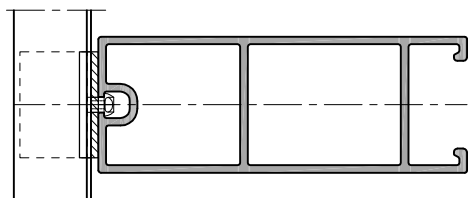
66.4

ST-033-CLOSE  
ST-0460



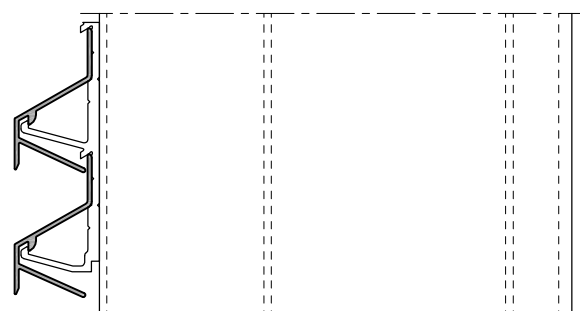
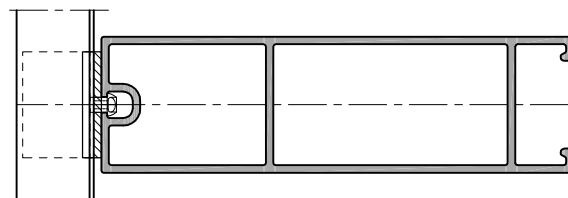
66.4

ST-033-CLOSE  
ST-0995



119.9

ST-033-CLOSE  
ST-1250



147.4

**STORAX**

Storax BV  
Wattstraat 1  
3335 LV Zwijndrecht  
Nederland

Tel. : +31 (0)78 303 09 00  
Fax : +31 (0)78 610 04 95  
E-mail: storax@storax.nl  
Website: www.storax.nl

Productgroep: Lamellenwand

Onderdeel : Lamel op dragerprofiel

Materiaal : Aluminium

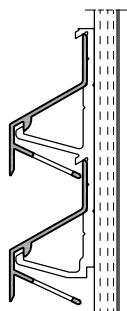
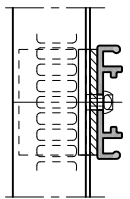
Schaal: 1:2

Datum: 01-06-2016

Blad:

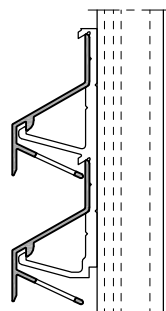
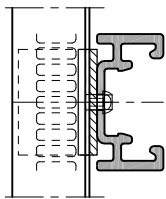
033-CLOSE DR

ST-033-PERFO  
ST-0065



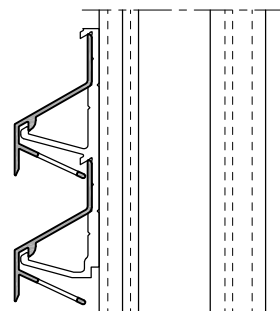
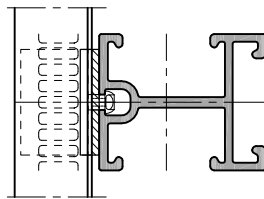
28.9

ST-033-PERFO  
ST-0195



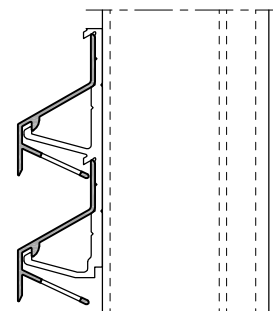
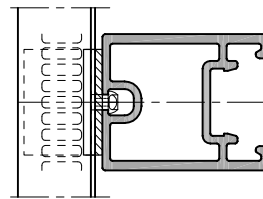
39.9

ST-033-PERFO  
ST-0440



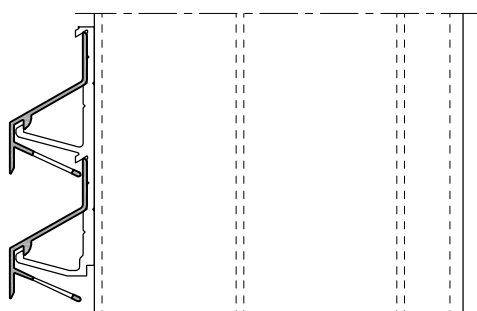
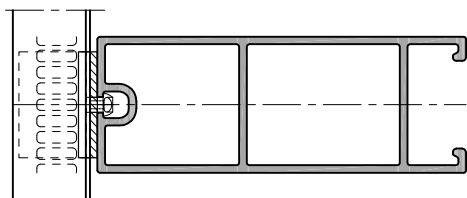
66.4

ST-033-PERFO  
ST-0460



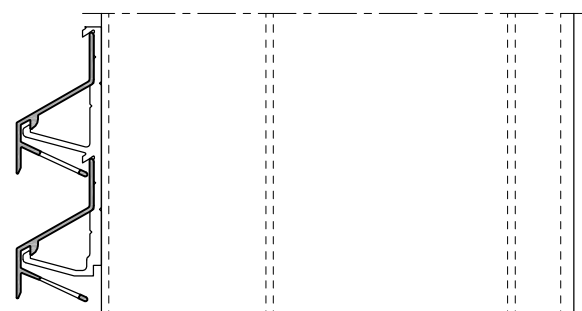
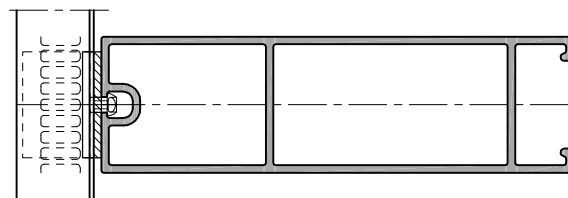
66.4

ST-033-PERFO  
ST-0995



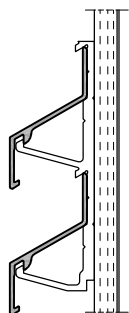
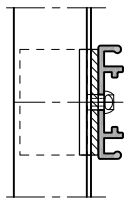
119.9

ST-033-PERFO  
ST-1250



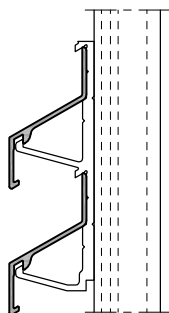
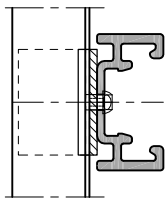
147.4

ST-033-HF  
ST-0065



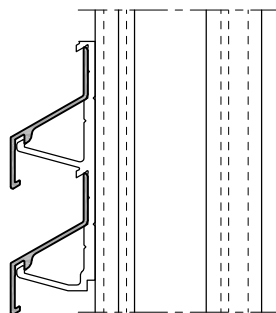
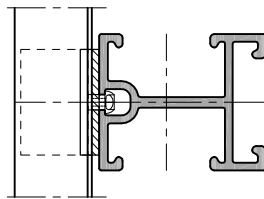
28.9

ST-033-HF  
ST-0195



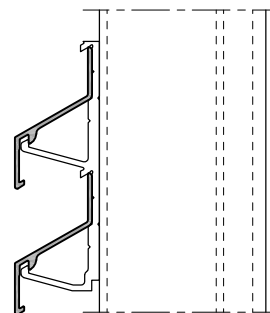
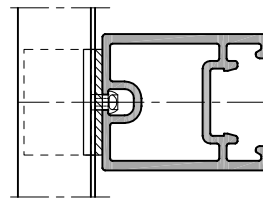
39.9

ST-033-HF  
ST-0440



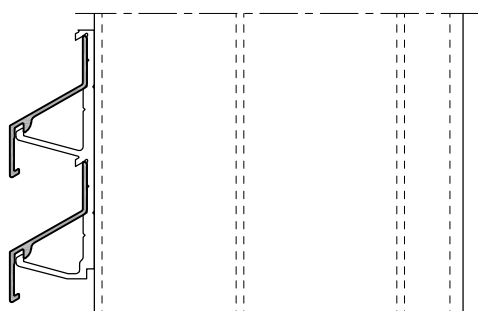
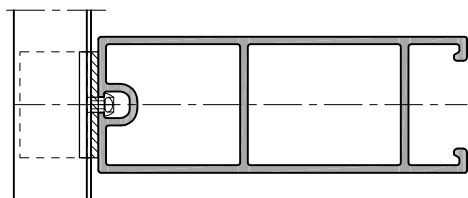
66.4

ST-033-HF  
ST-0460



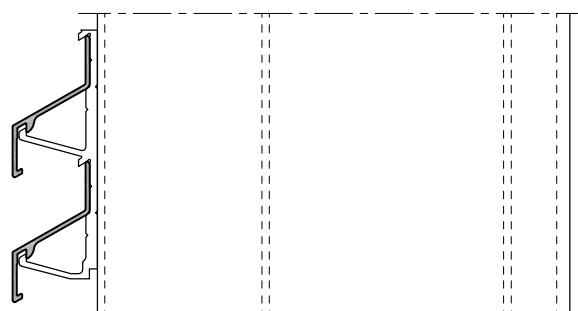
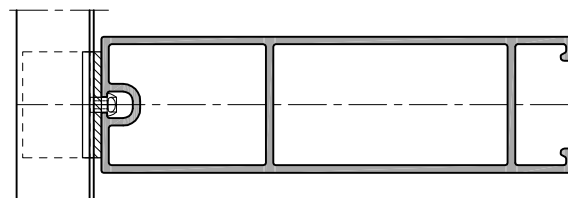
66.4

ST-033-HF  
ST-0995



119.9

ST-033-HF  
ST-1250



147.4

**STORAX**

Storax BV  
Wattstraat 1  
3335 LV Zwijndrecht  
Nederland

Tel. : +31 (0)78 303 09 00  
Fax : +31 (0)78 610 04 95  
E-mail: storax@storax.nl  
Website: www.storax.nl

Productgroep: Lamellenwand

Onderdeel : Lamel op dragerprofiel

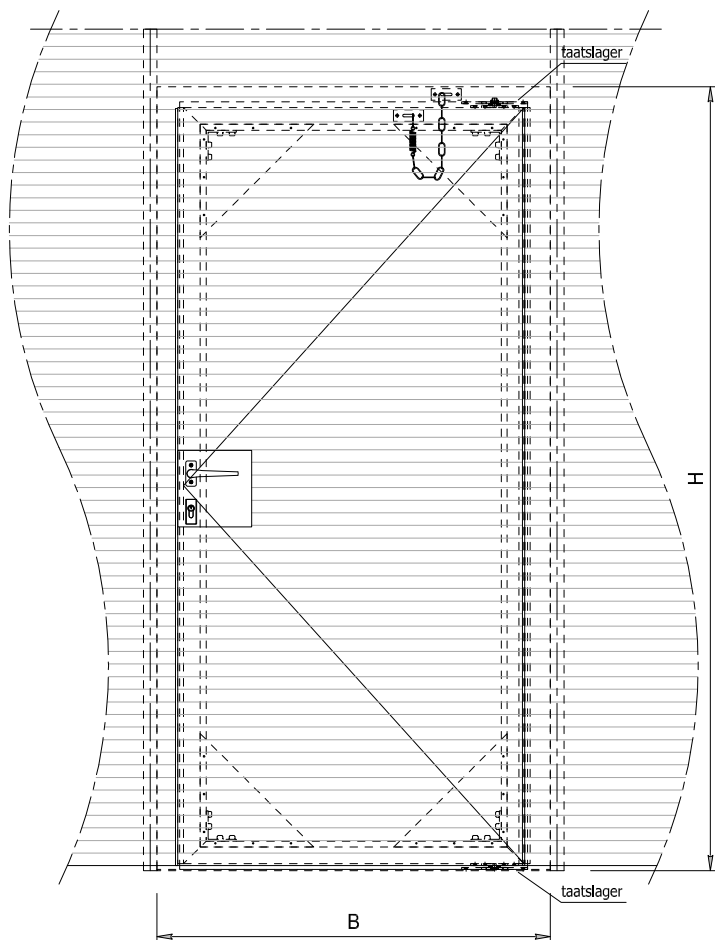
Materiaal : Aluminium

Schaal: 1:2

Datum: 01-06-2016

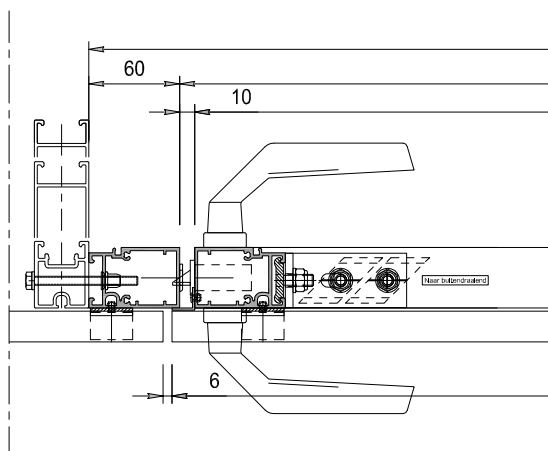
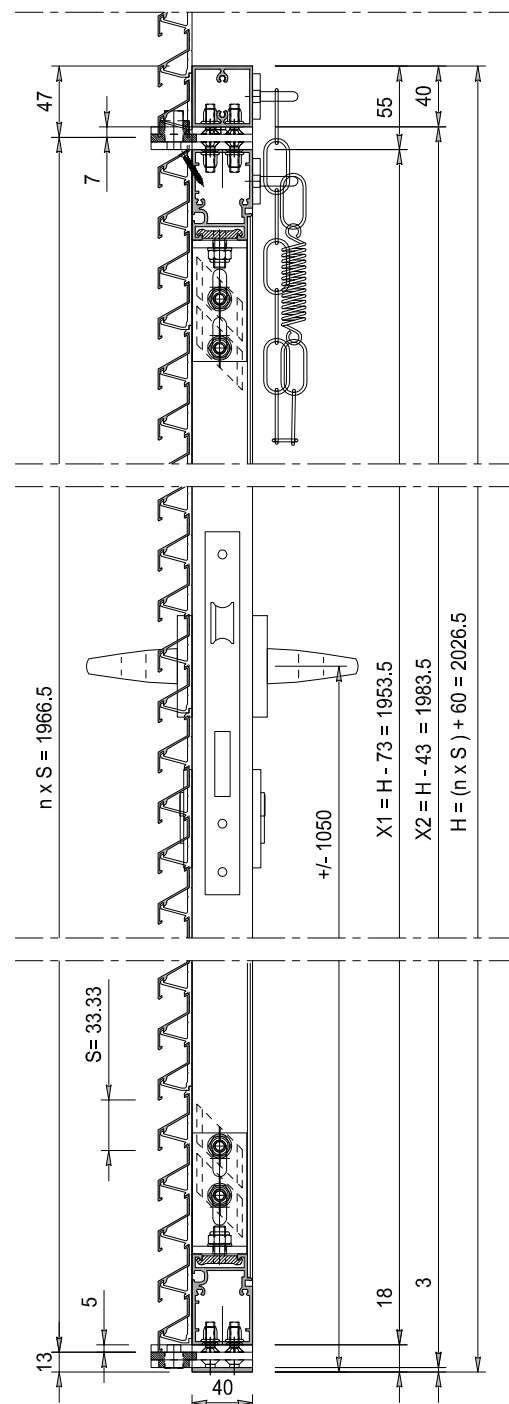
Blad:

**033-HF DR**

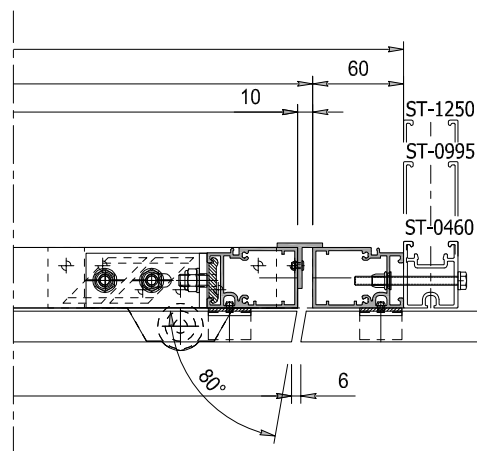


Legenda  
H ; Hoogte totaal in mm  
B ; Breedte totaal in mm  
X1; Hoogte deurleugel in mm  
X2; Nuttige opening hoogte in mm  
S ; Stap / Steek in mm  
n ; aantal lamellen op de deur

(B=1500 mm maximaal)  
(H=2700 mm maximaal)



B = 1040
920
900
40
62.4
911
22.4



**STORAX**

Storax BV  
Wattstraat 1  
3335 LV Zwijndrecht  
Nederland

Tel. : +31 (0)78 303 09 00  
Fax : +31 (0)78 610 04 95  
E-mail: storax@storax.nl  
Website: www.storax.nl

Productgroep: Lamellenwand

Onderdeel : Deur met lamel ST-033-01

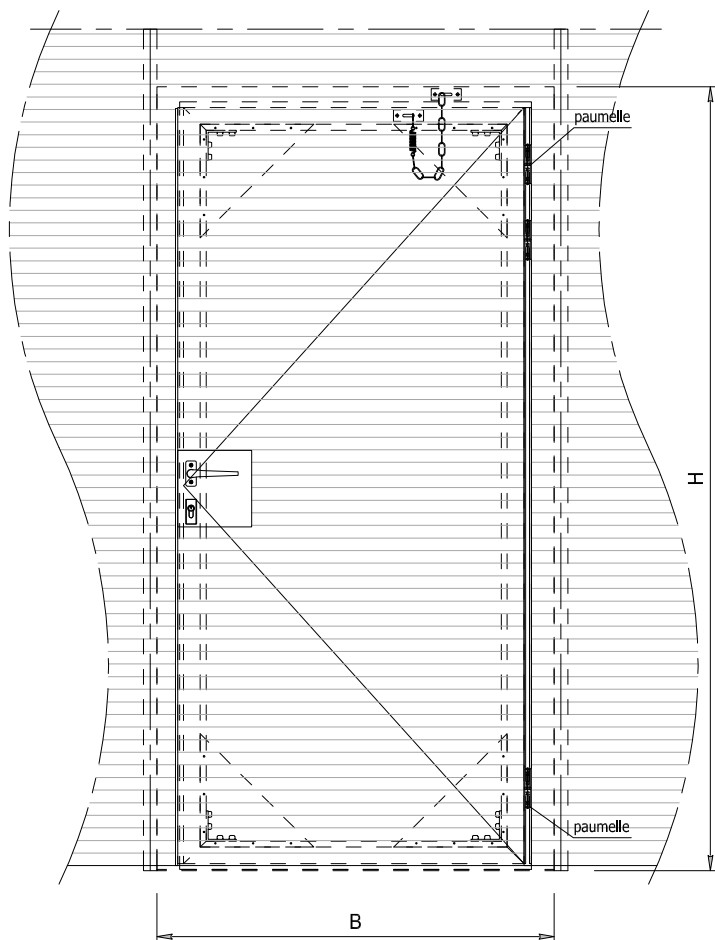
Materiaal : Aluminium

Schaal: 1:20 1:5

Datum: 01-06-2016

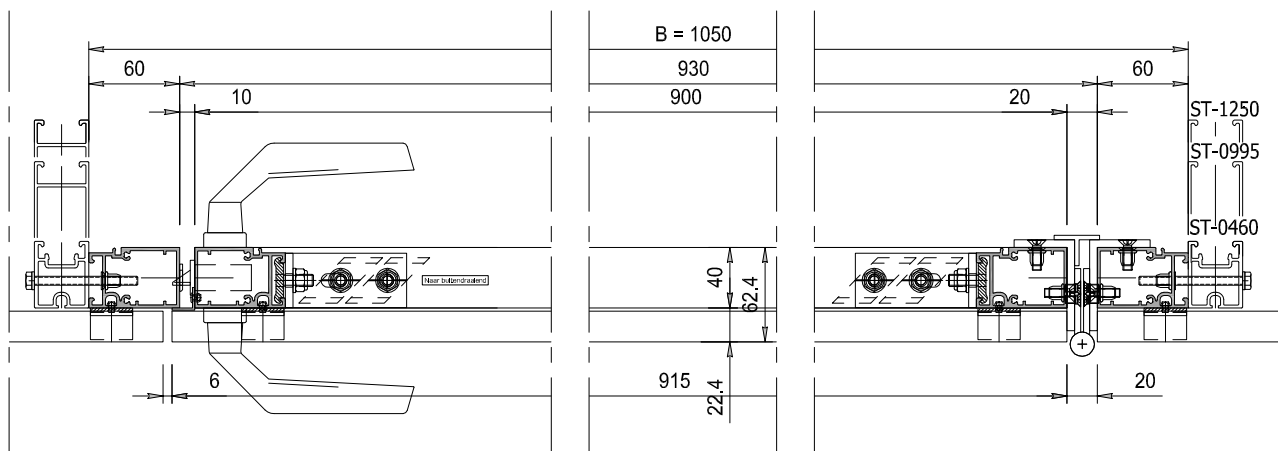
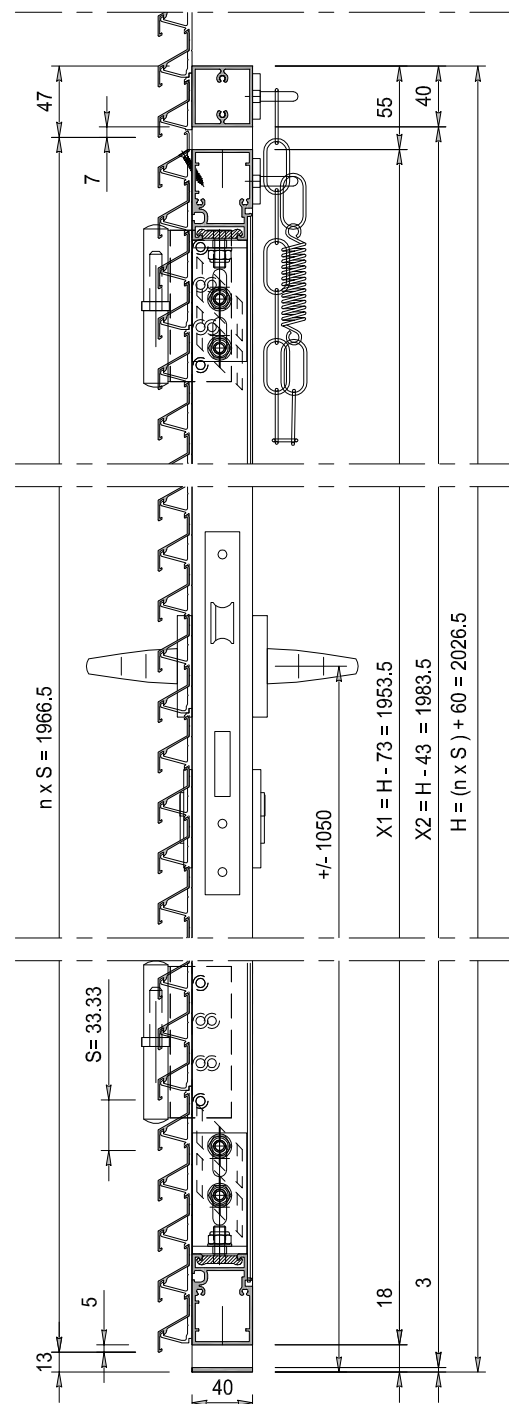
Blad:

**D-033-01**



Legenda  
H ; Hoogte totaal in mm  
B ; Breedte totaal in mm  
X1; Hoogte deurvleugel in mm  
X2; Nuttige opening hoogte in mm  
S ; Stap / Steek in mm  
n ; aantal lamellen op de deur

(B=1500 mm maximaal)  
(H=2700 mm maximaal)



**STORAX**

Storax BV  
Wattstraat 1  
3335 LV Wijnindrecht  
Nederland

Tel. : +31 (0)78 303 09 00  
Fax : +31 (0)78 610 04 95  
E-mail: storax@storax.nl  
Website: www.storax.nl

Productgroep: Lamellenwand

Onderdeel : Deur met lamel ST-033-01

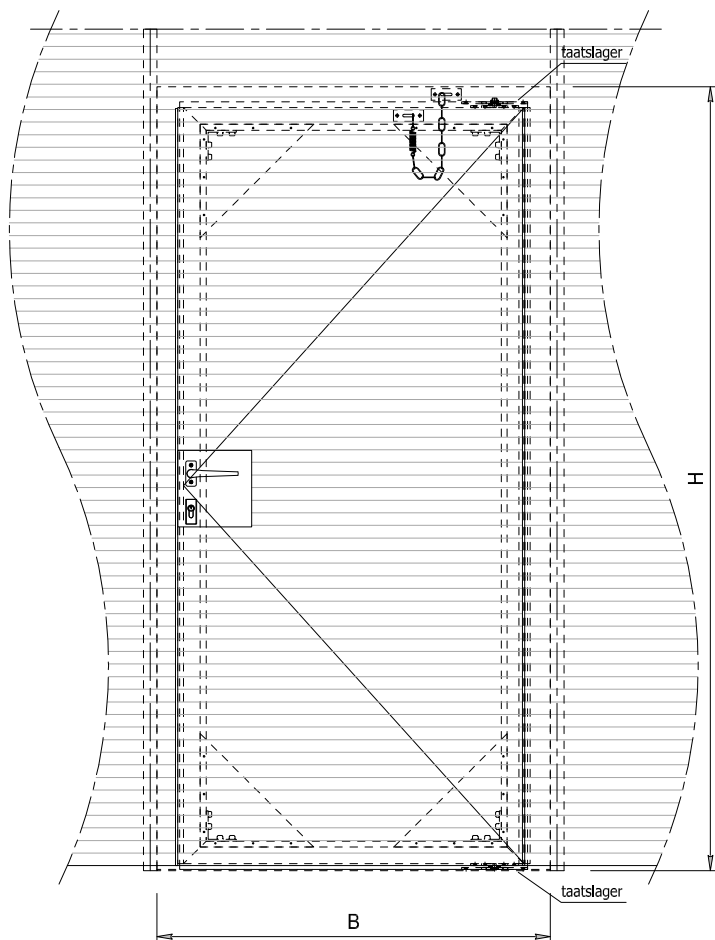
Materiaal : Aluminium

Schaal: 1:20 1:5

Datum: 01-06-2016

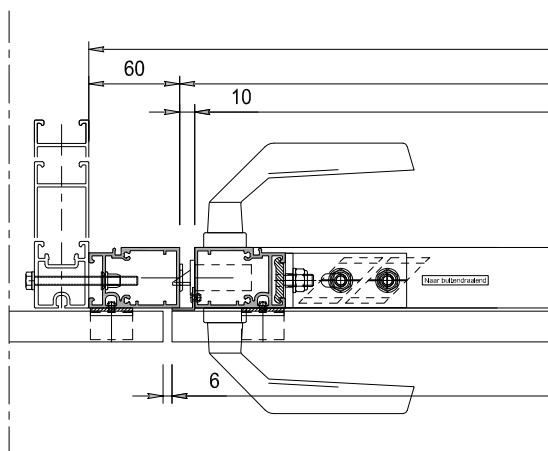
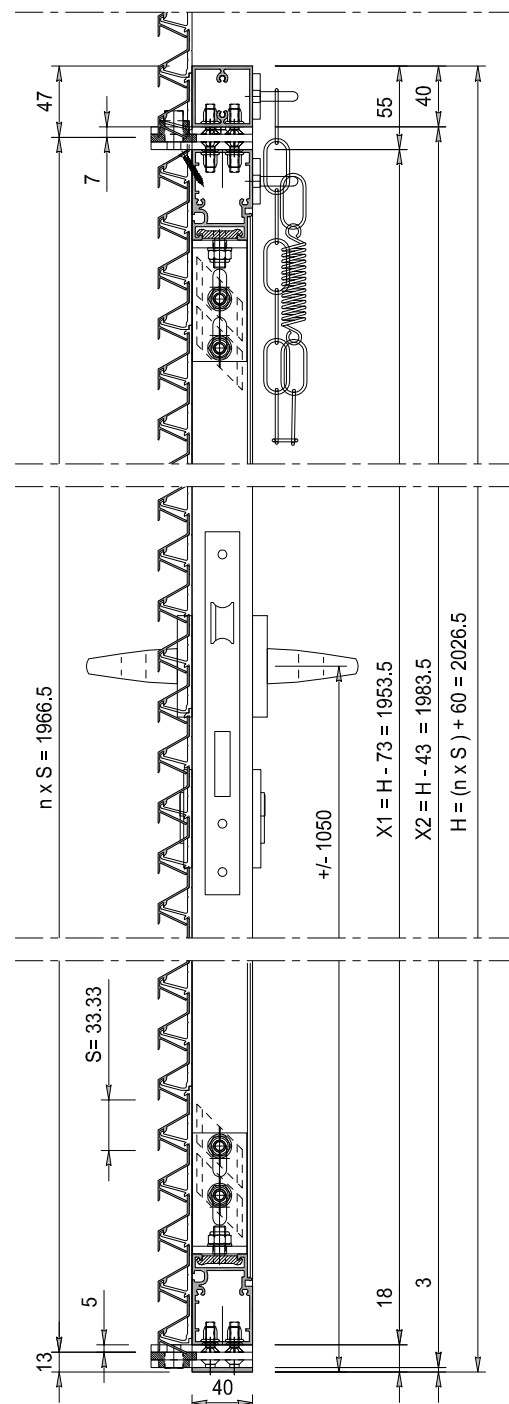
Blad:

**D-033-01'**

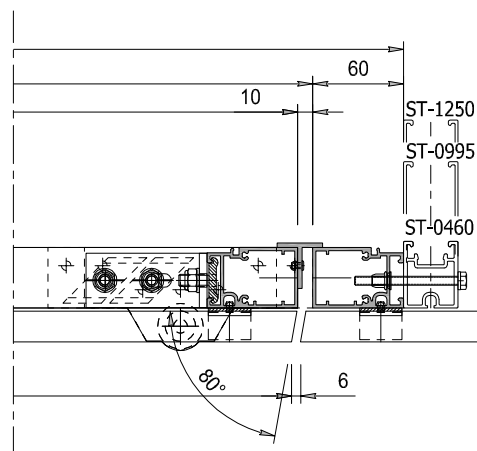


Legenda  
H ; Hoogte totaal in mm  
B ; Breedte totaal in mm  
X1; Hoogte deurvleugel in mm  
X2; Nuttige opening hoogte in mm  
S ; Stap / Steek in mm  
n ; aantal lamellen op de deur

(B=1500 mm maximaal)  
(H=2700 mm maximaal)



B = 1040
920
900
40
62.4
911
22.4



**STORAX**

Storax BV  
Wattstraat 1  
3335 LV Zwijndrecht  
Nederland

Tel. : +31 (0)78 303 09 00  
Fax : +31 (0)78 610 04 95  
E-mail: storax@storax.nl  
Website: www.storax.nl

Productgroep: Lamellenwand

Onderdeel : Deur met lamel ST-033-CLOSE

Materiaal : Aluminium

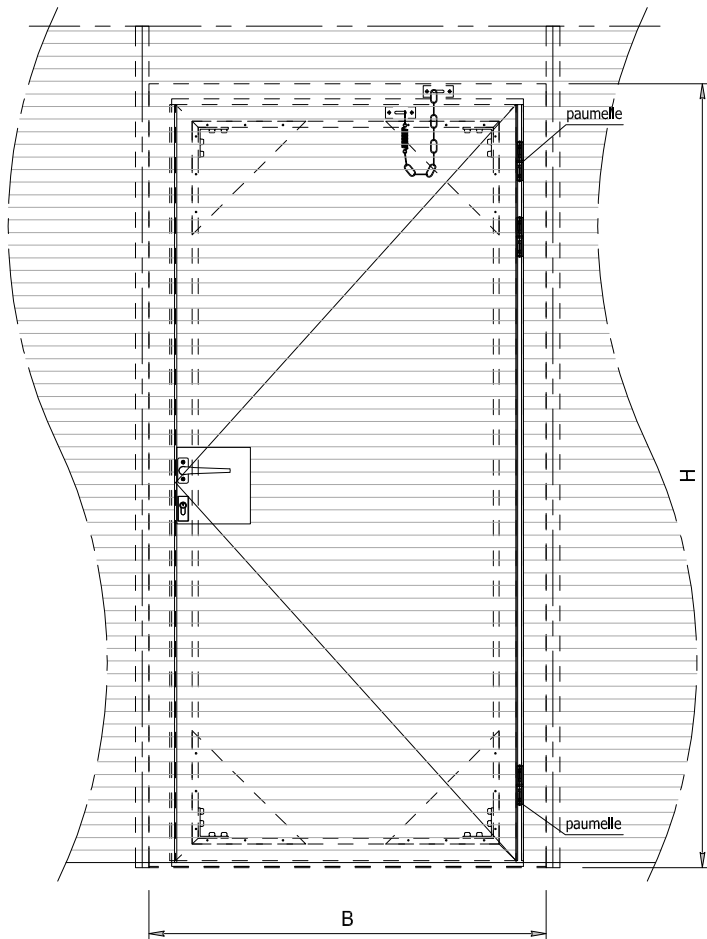
Schaal: 1:20 1:5

Datum: 01-06-2016

Blad:

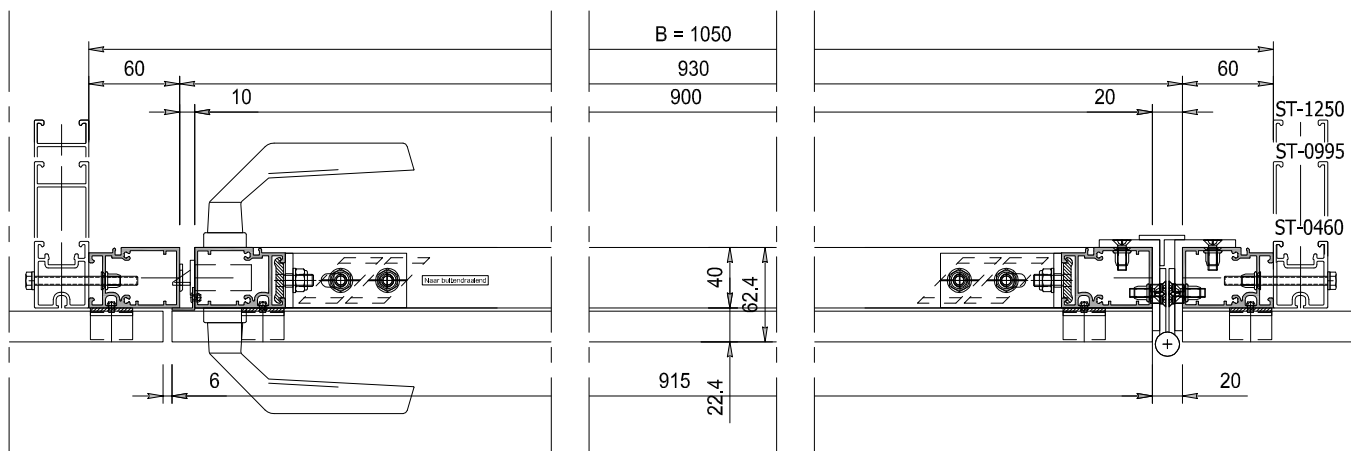
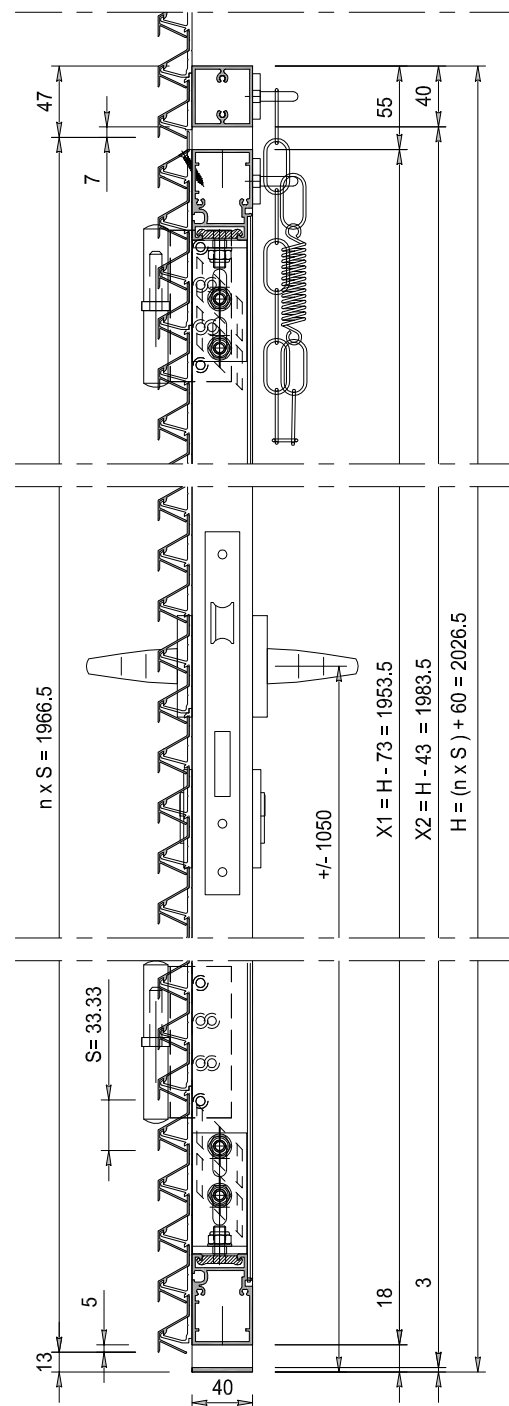
**D-033-CLOSE**





Legenda  
H ; Hoogte totaal in mm  
B ; Breedte totaal in mm  
X1; Hoogte deurvleugel in mm  
X2; Nuttige opening hoogte in mm  
S ; Stap / Steek in mm  
n ; aantal lamellen op de deur

(B=1500 mm maximaal)  
(H=2700 mm maximaal)



**STORAX**

Storax BV  
Wattstraat 1  
3335 LV Wijnindrecht  
Nederland

Tel. : +31 (0)78 303 09 00  
Fax : +31 (0)78 610 04 95  
E-mail: storax@storax.nl  
Website: www.storax.nl

Productgroep: Lamellenwand

Onderdeel : Deur met lamel ST-033-CLOSE

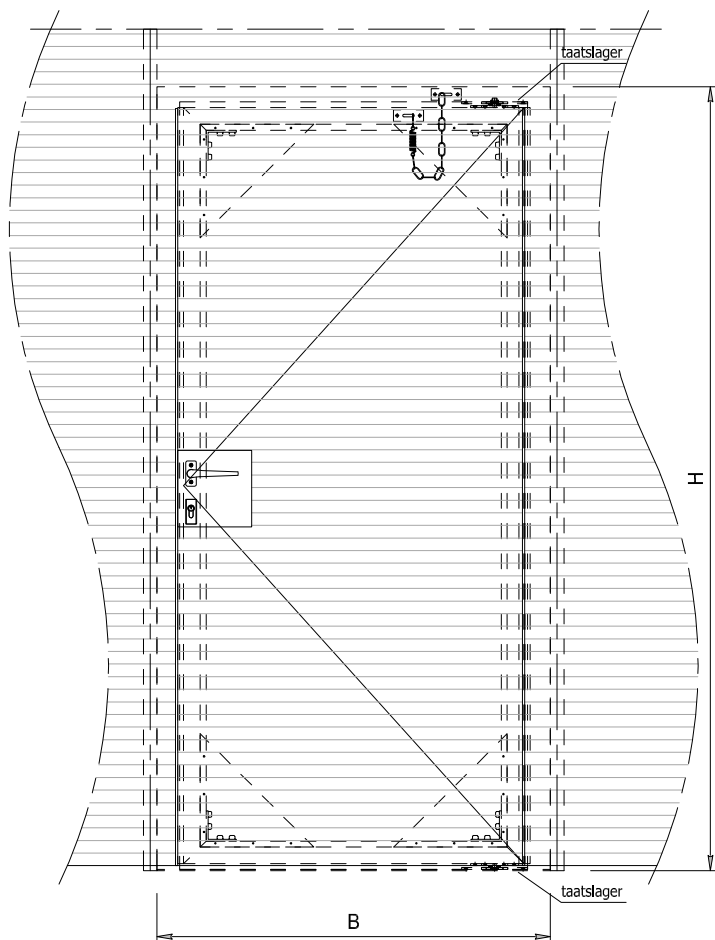
Materiaal : Aluminium

Schaal: 1:20 1:5

Datum: 01-06-2016

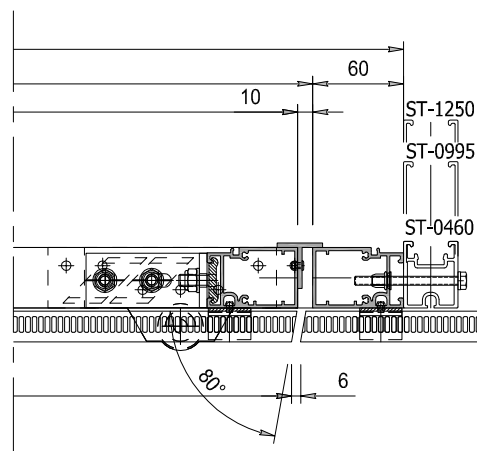
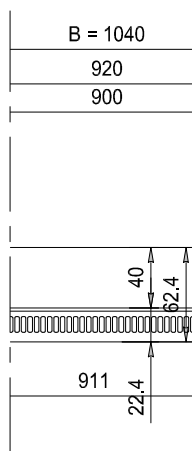
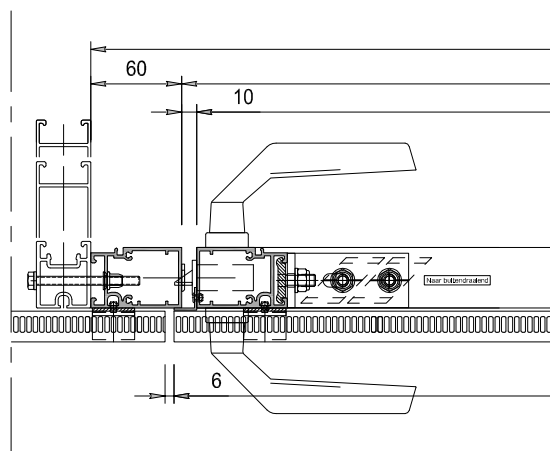
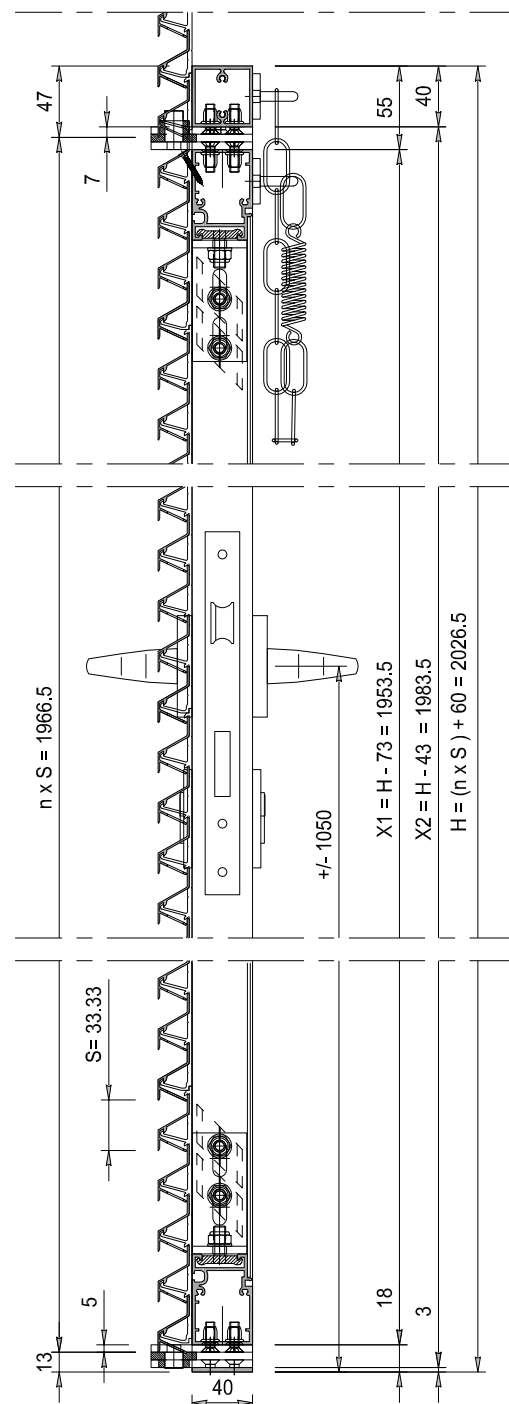
Blad:

**D-033-CLOSE'**



Legenda  
H ; Hoogte totaal in mm  
B ; Breedte totaal in mm  
X1; Hoogte deurleugel in mm  
X2; Nuttige opening hoogte in mm  
S ; Stap / Steek in mm  
n ; aantal lamellen op de deur

(B=1500 mm maximaal)  
(H=2700 mm maximaal)



**STORAX**

Storax BV  
Wattstraat 1  
3335 LV Zwijndrecht  
Nederland

Tel. : +31 (0)78 303 09 00  
Fax : +31 (0)78 610 04 95  
E-mail: storax@storax.nl  
Website: www.storax.nl

Productgroep: Lamellenwand

Onderdeel : Deur met lamel ST-033-PERFO

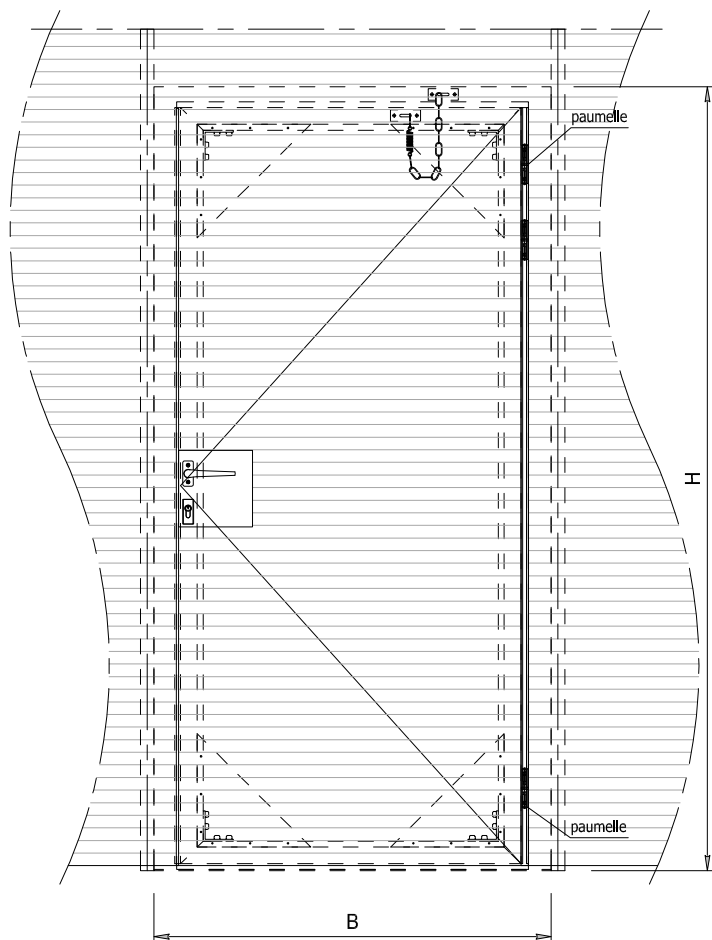
Materiaal : Aluminium

Schaal: 1:20 1:5

Datum: 01-06-2016

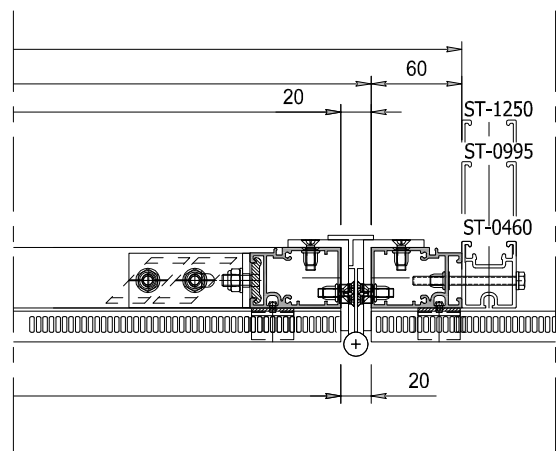
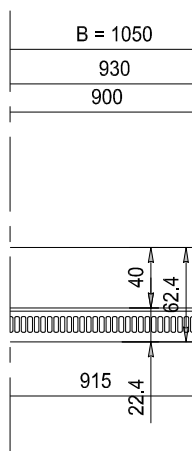
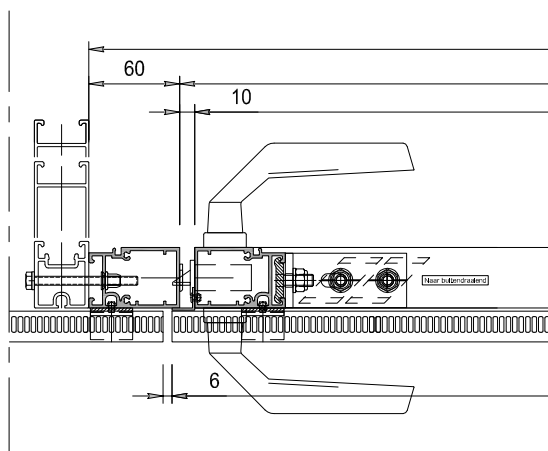
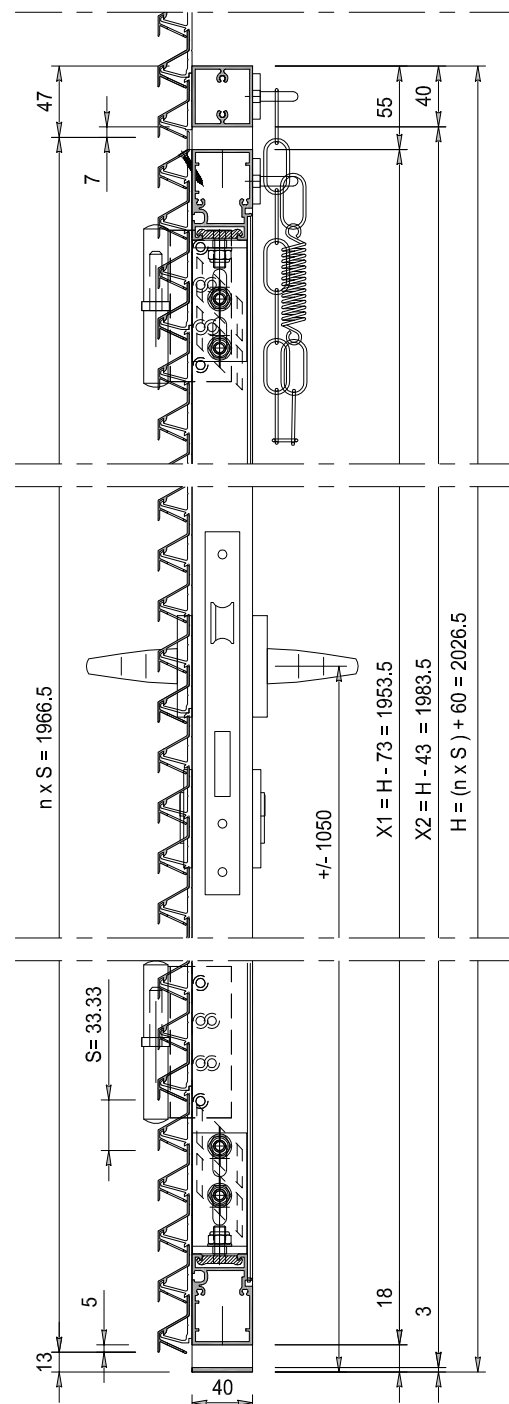
Blad:

**D-033-PERFO**



Legenda  
H ; Hoogte totaal in mm  
B ; Breedte totaal in mm  
X1; Hoogte deurvleugel in mm  
X2; Nuttige opening hoogte in mm  
S ; Stap / Steek in mm  
n ; aantal lamellen op de deur

(B=1500 mm maximaal)  
(H=2700 mm maximaal)



**STORAX**

Storax BV  
Wattstraat 1  
3335 LV Wijnindrecht  
Nederland

Tel. : +31 (0)78 303 09 00  
Fax : +31 (0)78 610 04 95  
E-mail: storax@storax.nl  
Website: www.storax.nl

Productgroep: Lamellenwand

Onderdeel : Deur met lamel ST-033-PERFO

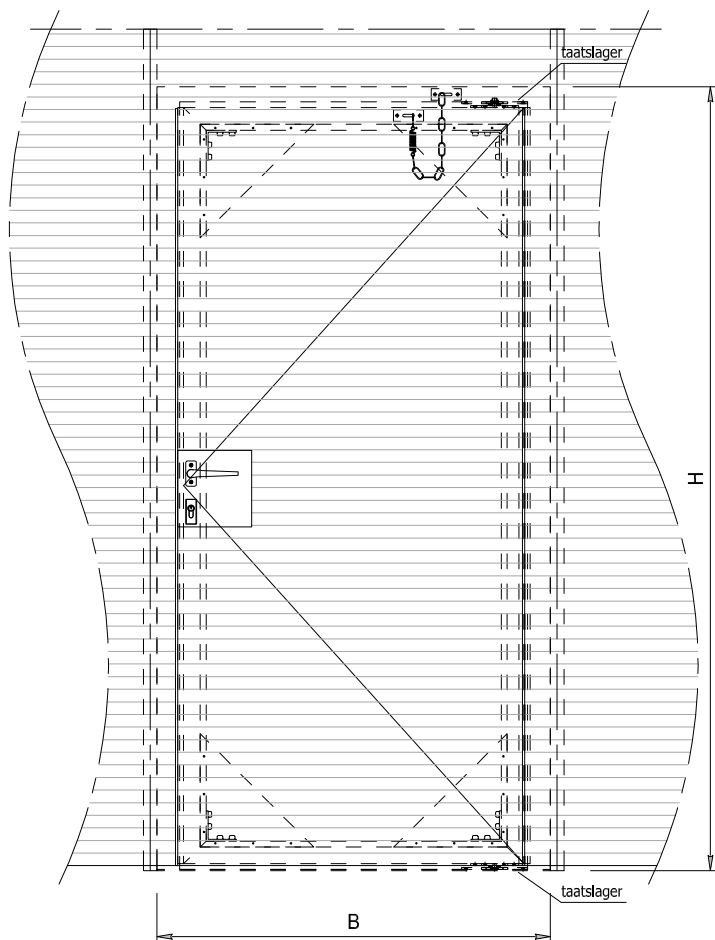
Materiaal : Aluminium

Schaal: 1:20 1:5

Datum: 01-06-2016

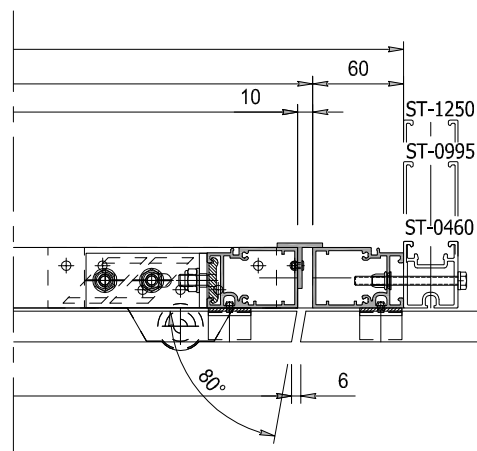
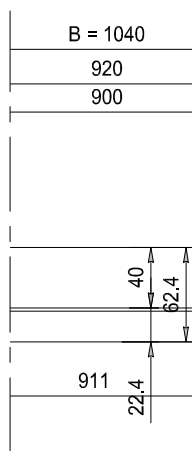
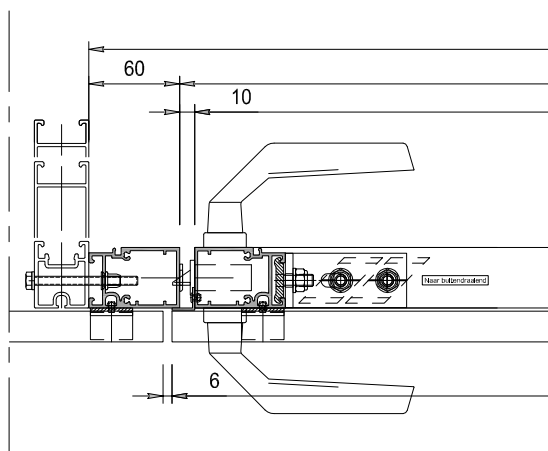
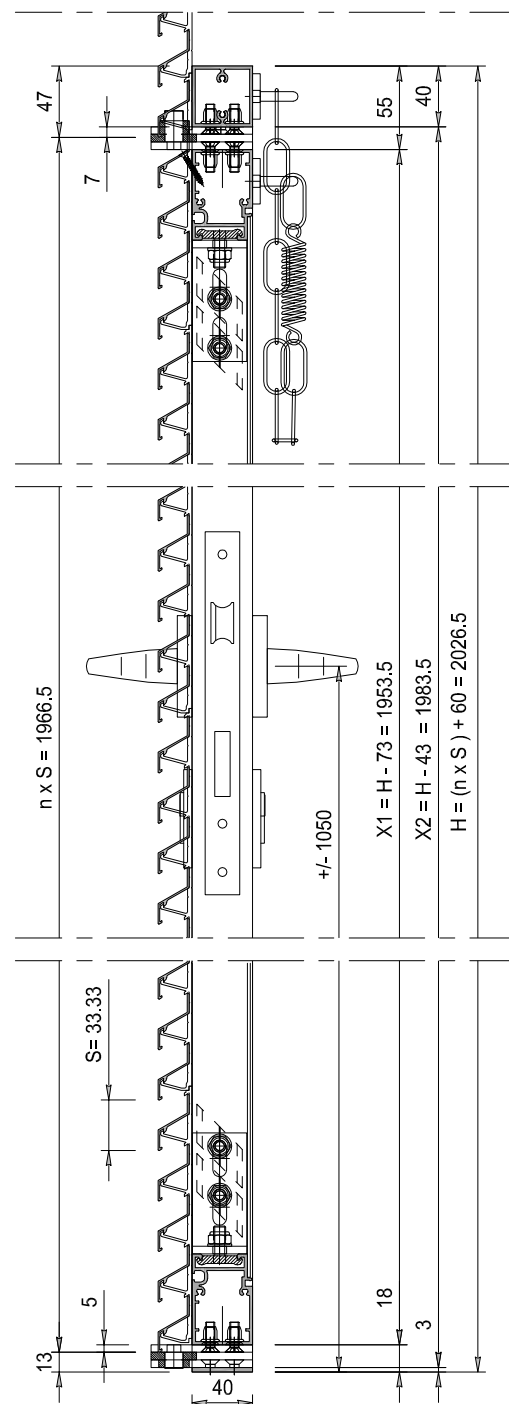
Blad:

**D-033-PERFO'**



Legenda  
H ; Hoogte totaal in mm  
B ; Breedte totaal in mm  
X1; Hoogte deurleugel in mm  
X2; Nuttige opening hoogte in mm  
S ; Stap / Steek in mm  
n ; aantal lamellen op de deur

(B=1500 mm maximaal)  
(H=2700 mm maximaal)



**STORAX**

Storax BV  
Wattstraat 1  
3335 LV Zwijndrecht  
Nederland

Tel. : +31 (0)78 303 09 00  
Fax : +31 (0)78 610 04 95  
E-mail: storax@storax.nl  
Website: www.storax.nl

Productgroep: Lamellenwand

Onderdeel : Deur met lamel ST-033-HF

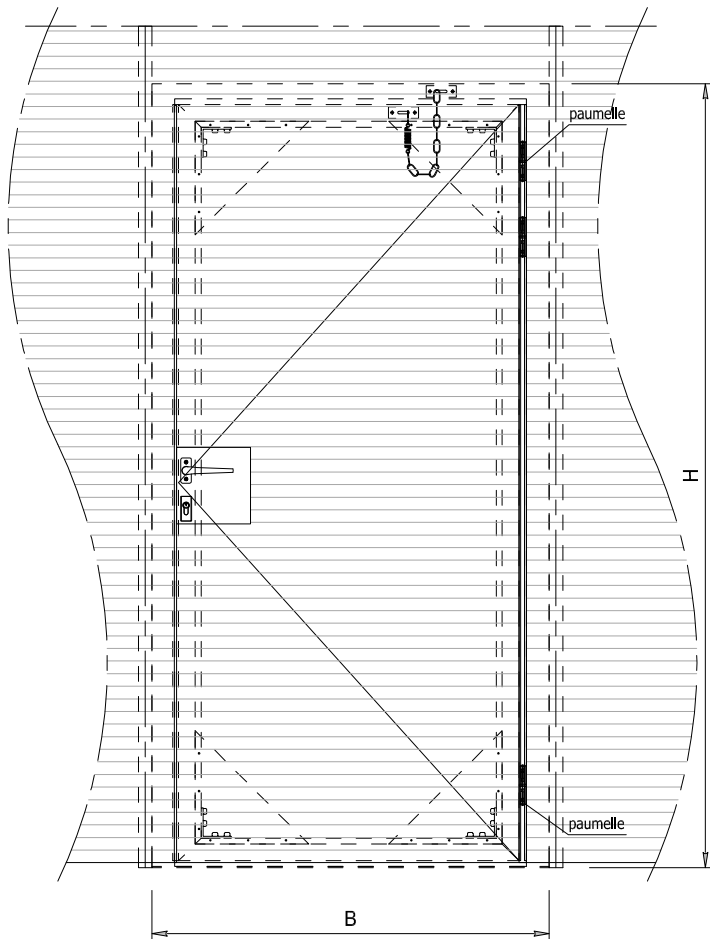
Materiaal : Aluminium

Schaal: 1:20 1:5

Datum: 01-06-2016

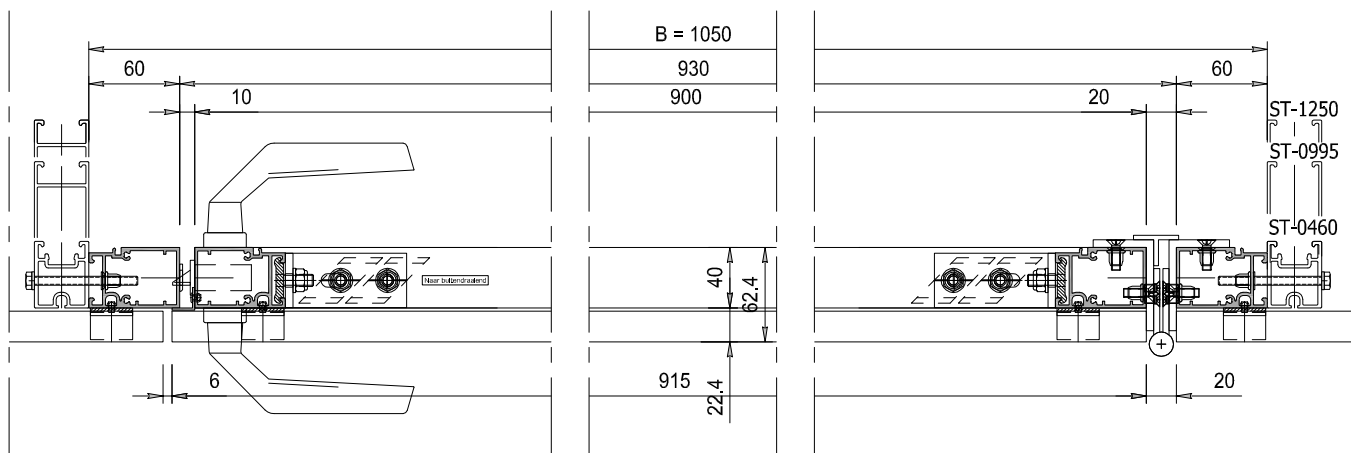
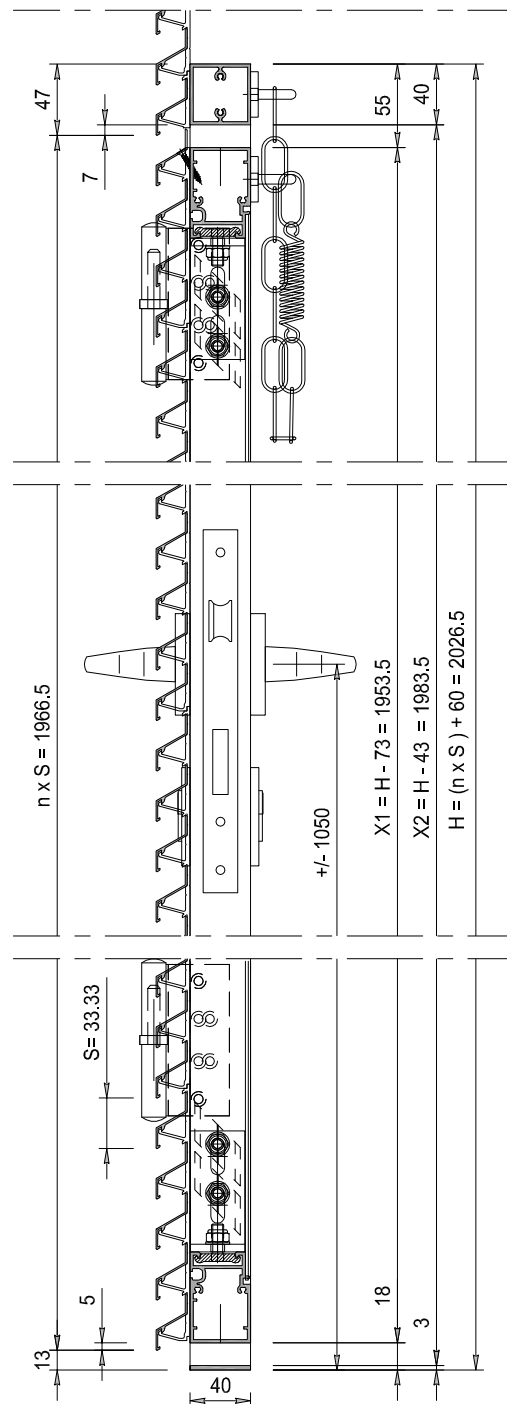
Blad:

**D-033-HF**



Legenda  
H ; Hoogte totaal in mm  
B ; Breedte totaal in mm  
X1; Hoogte deurvleugel in mm  
X2; Nuttige opening hoogte in mm  
S ; Stap / Steek in mm  
n ; aantal lamellen op de deur

(B=1500 mm maximaal)  
(H=2700 mm maximaal)



**STORAX**

Storax BV  
Wattstraat 1  
3335 LV Wijnindrecht  
Nederland

Tel. : +31 (0)78 303 09 00  
Fax : +31 (0)78 610 04 95  
E-mail: storax@storax.nl  
Website: www.storax.nl

Productgroep: Lamellenwand

Onderdeel : Deur met lamel ST-033-HF

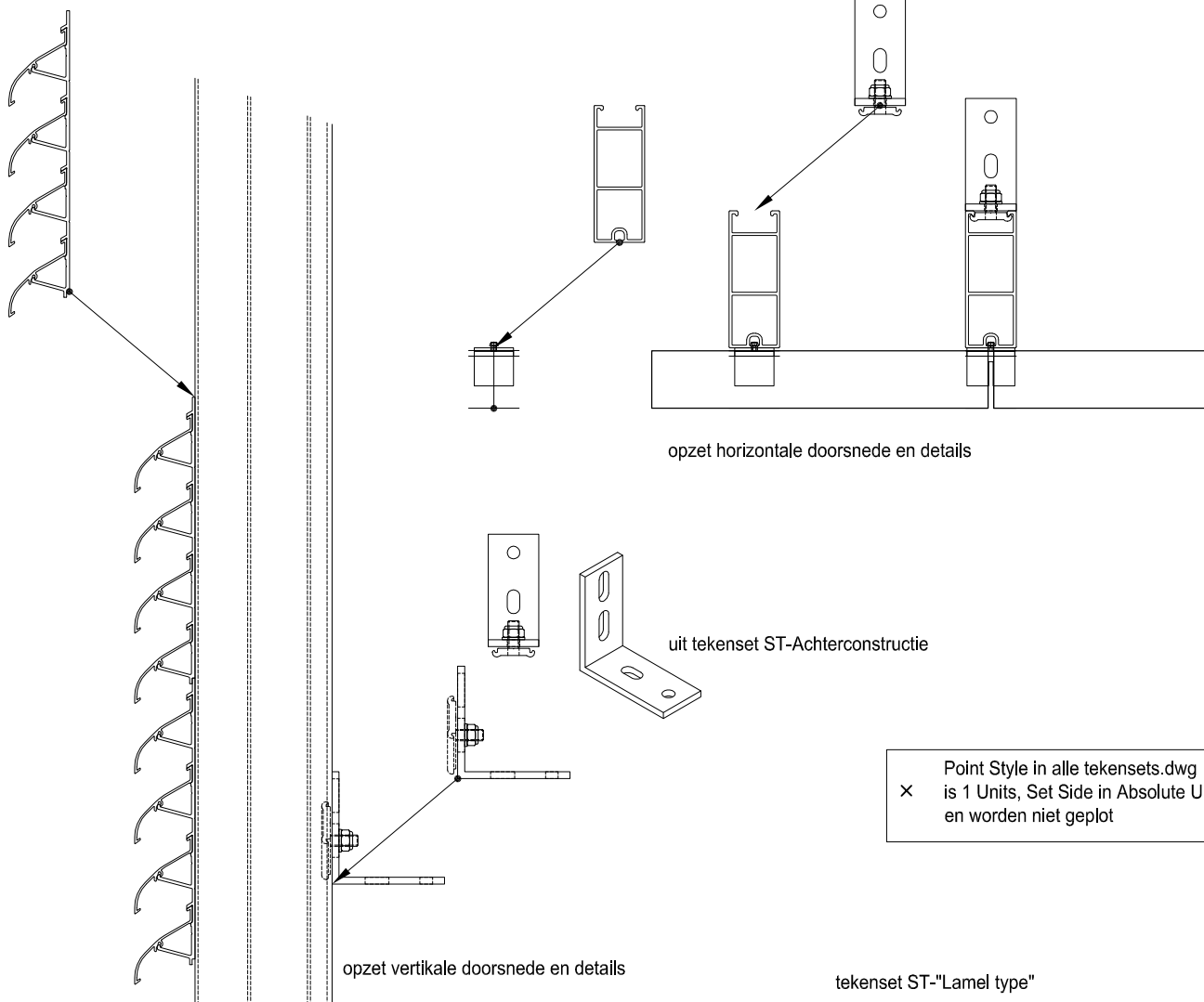
Materiaal : Aluminium

Schaal: 1:20 1:5

Datum: 01-06-2016

Blad:

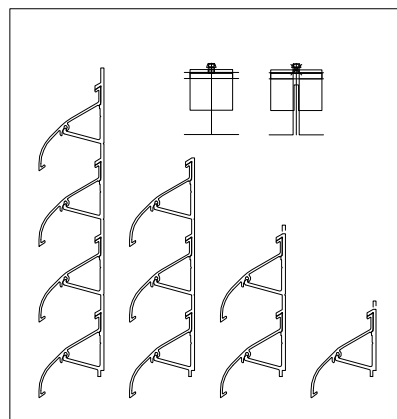
**D-033-HF'**



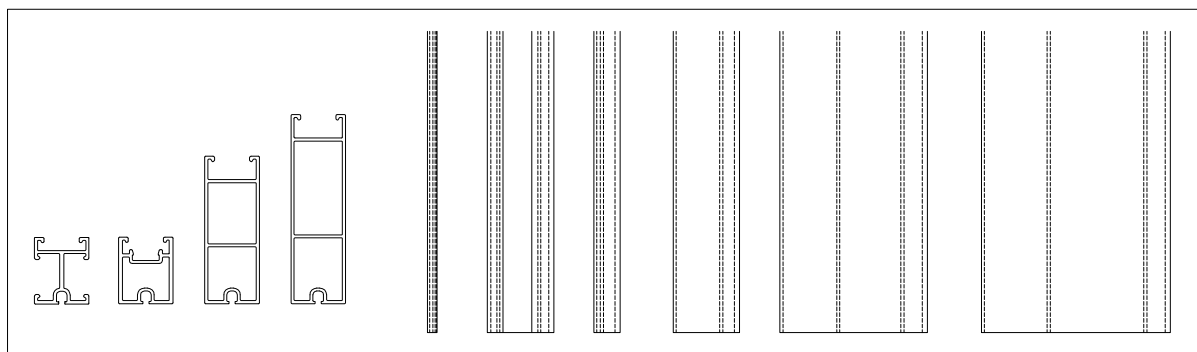
× Point Style in alle tekensets.dwg  
is 1 Units, Set Side in Absolute Units  
en worden niet geplot

Zie ook;  
Overzicht lamellen, zie tekening 01 en 02  
Overzicht dragers, deur en cassettekaders tek.03  
Overzicht bevestigings onderdelen, zie tekening 04  
Deuren in lamellenwand, zie tekening 05 t/m 11  
Cassettesysteem details, zie tekening 12

tekenset ST-"Lamel type"



tekenset ST-DRAAGPROFIEL



tekensets zijn in DWG formaat te downloaden

**STORAX**

Storax BV  
Wattstraat 1  
3335 LV Zwijndrecht  
Nederland

Tel. : +31 (0)78 303 09 00  
Fax : +31 (0)78 610 04 95  
E-mail: storax@storax.nl  
Website: www.storax.nl

Productgroep: Lamellenwand	
Onderdeel : Instructie gebruik tekensets in dwg	
Materiaal : -	
Schaal: -	Blad:
Datum: 01-06-2016	<b>Instructie</b>