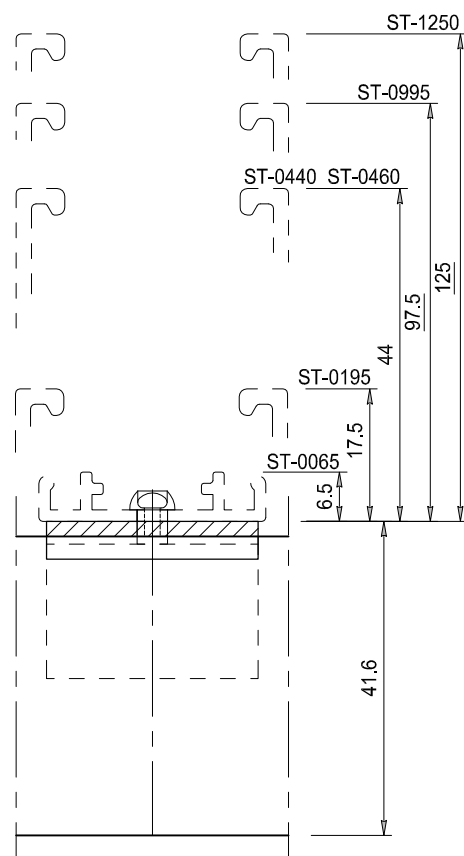


DSN



BAZ

Lamelhouder wordt uitsluitend  
toegepast met een dragerprofiel  
Overzicht dragers op tek. ST-Dragers

Aluminium extrusie kwaliteit  
EN AW 6063 T66

LAMEL TYPE: ST-033-V

|  |       |    |
|--|-------|----|
| Steek  | 33.33 | mm |
| Diepte   | 39.6  | mm |
| Hoogte   | 37.6  | mm |
| K-factor   | 61.04 |    |
| Max. horizontale overspanning<br>tussen twee dragers | 800   | mm |
| bij winddruk Q=800 Pa                                |       |    |
| Visuele vrije doorlaat                               | 60    | %  |
| Fysische vrije doorlaat                              | 43    | %  |

**STORAX**

Storax BV  
Wattstraat 1  
3335 LV Zwijndrecht  
Nederland

Tel. : +31 (0)78 303 09 00  
Fax : +31 (0)78 610 04 95  
E-mail: storax@storax.nl  
Website: www.storax.nl

Productgroep: Lamellenwand

Onderdeel :Lamel type ST-033-V

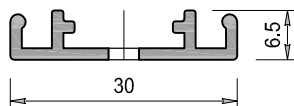
Materiaal :Aluminium

Schaal: 1:1

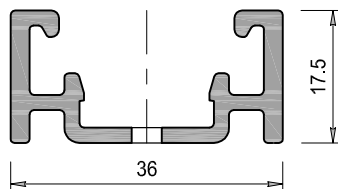
Datum: 01-06-2016

Blad:

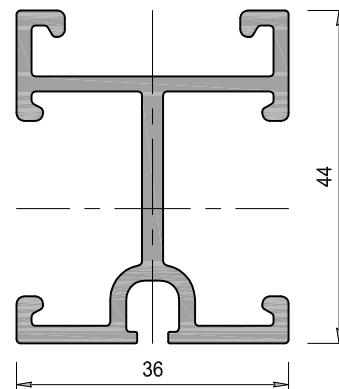
**ST-033-V**



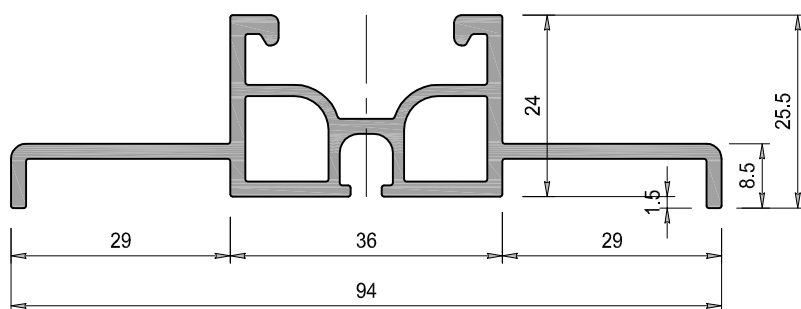
| DRAAGPROFIEL TYPE: ST-0065 |        |
|----------------------------|--------|
| Profiel diepte             | 6.5 mm |
| Profiel breedte            | 30 mm  |
| Bevestiging                |        |
| h.o.h. maximaal            | 500 mm |



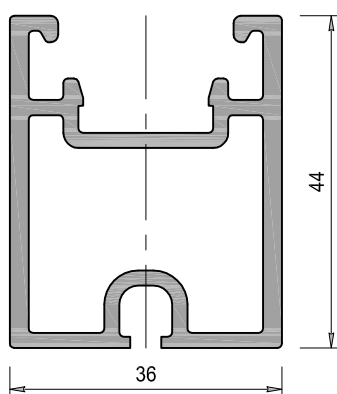
| DRAAGPROFIEL TYPE: ST-0195                                 |         |
|--|---------|
| Profiel diepte   | 17.5 mm |
| Profiel breedte  | 36 mm   |
| Maximale verticale overspanning bij winddruk Q=800 Pa, ca. | 600 mm  |



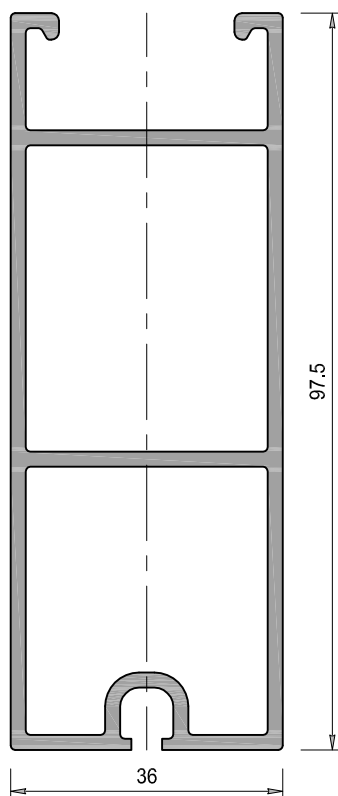
| DRAAGPROFIEL TYPE: ST-0440                                 |         |
|--|---------|
| Profiel diepte   | 44 mm   |
| Profiel breedte  | 36 mm   |
| Maximale verticale overspanning bij winddruk Q=800 Pa, ca. | 1500 mm |



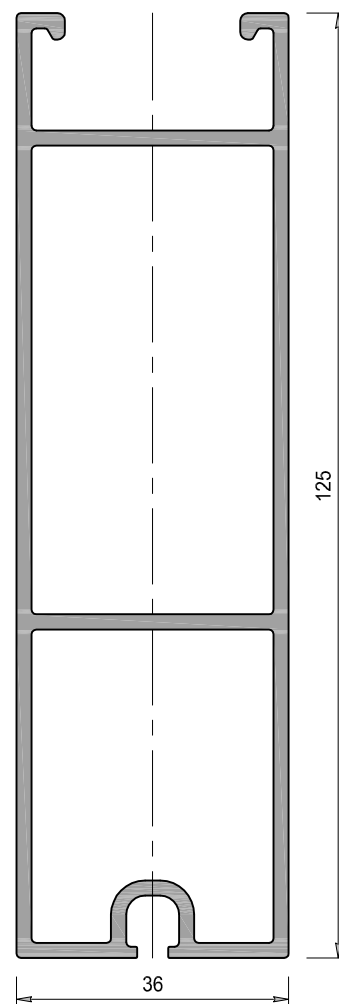
| DRAAGPROFIEL TYPE: ST-0240                                 |         |
|--|---------|
| Profiel diepte   | 25.5 mm |
| Profiel breedte  | 94 mm   |
| Maximale verticale overspanning bij winddruk Q=800 Pa, ca. | 1120 mm |



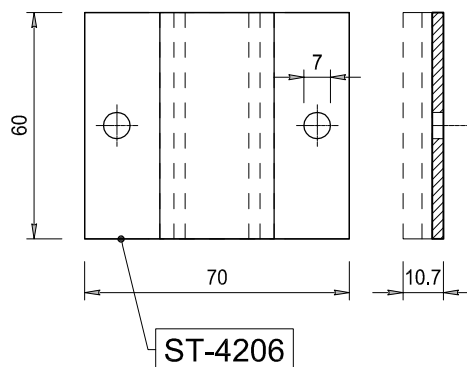
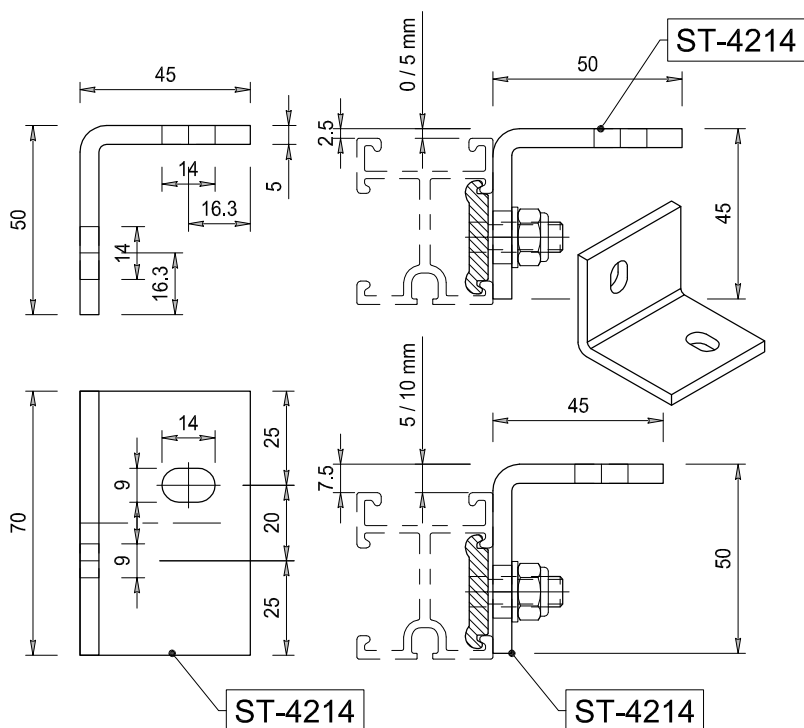
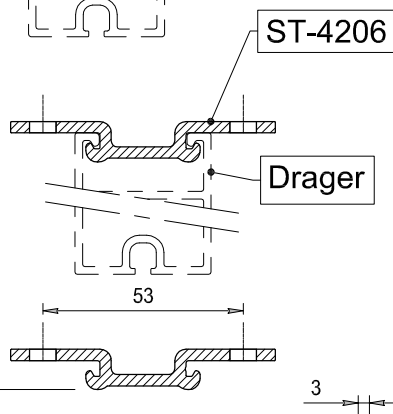
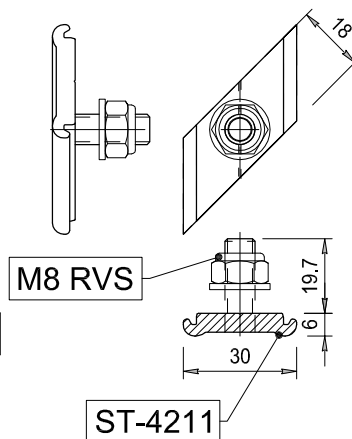
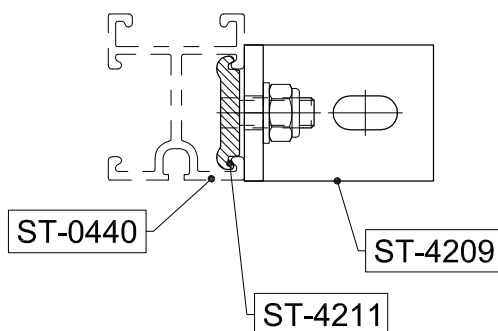
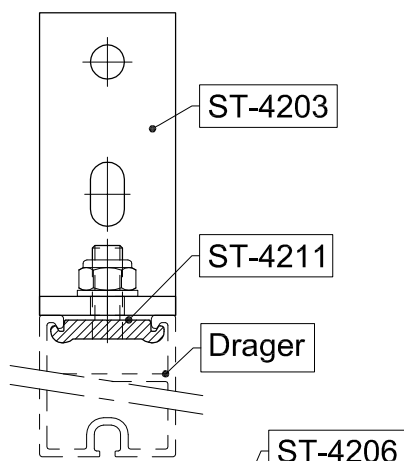
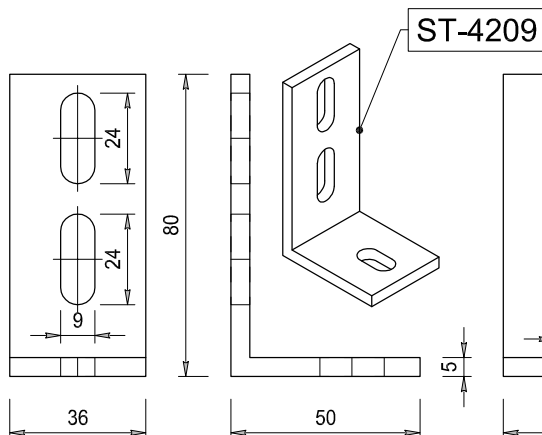
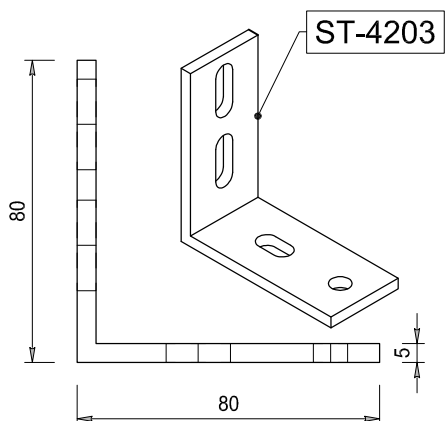
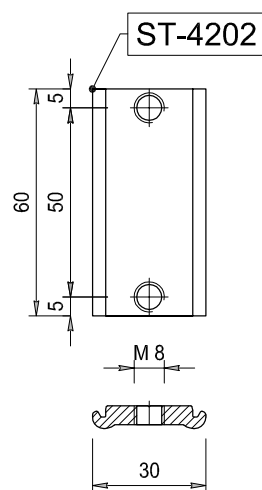
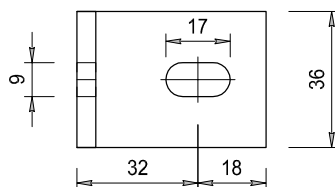
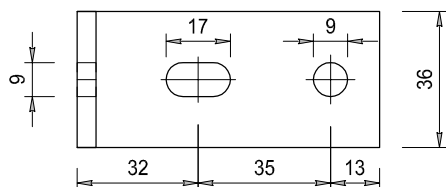
| DRAAGPROFIEL TYPE: ST-0460                                 |         |
|--|---------|
| Profiel diepte   | 44 mm   |
| Profiel breedte  | 36 mm   |
| Maximale verticale overspanning bij winddruk Q=800 Pa, ca. | 1500 mm |



| DRAAGPROFIEL TYPE: ST-0995                                 |         |
|--|---------|
| Profiel diepte   | 97.5 mm |
| Profiel breedte  | 36 mm   |
| Maximale verticale overspanning bij winddruk Q=800 Pa, ca. | 2800 mm |



| DRAAGPROFIEL TYPE: ST-1250                                 |         |
|--|---------|
| Profiel diepte   | 125 mm  |
| Profiel breedte  | 36 mm   |
| Maximale verticale overspanning bij winddruk Q=800 Pa, ca. | 3600 mm |



**STORAX**

Storax BV  
Wattstraat 1  
3335 LV Zwijndrecht  
Nederland

Tel. : +31 (0)78 303 09 00  
Fax : +31 (0)78 610 04 95  
E-mail: storax@storax.nl  
Website: www.storax.nl

Productgroep: Lamellenwand

Onderdeel : Overzicht Bevestigings onderdelen

Materiaal : Aluminium / RVS

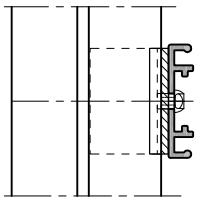
Schaal: 1:2

Datum: 01-06-2016

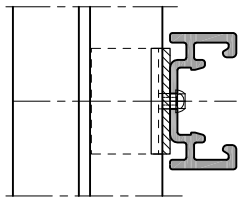
Blad:

**ST-Bevestiging**

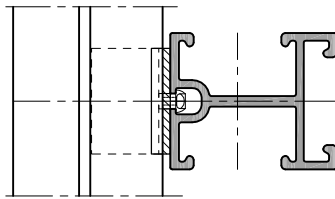
ST-033-V  
ST-0065



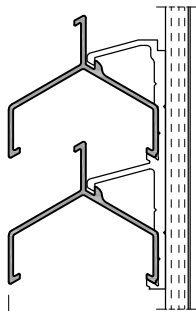
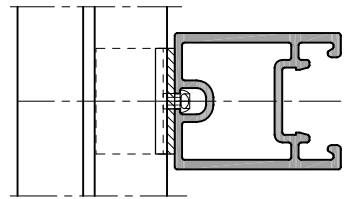
ST-033-V  
ST-0195



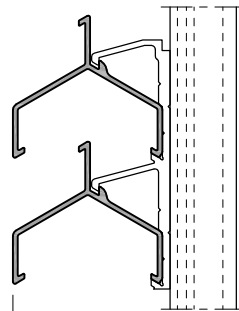
ST-033-V  
ST-0440



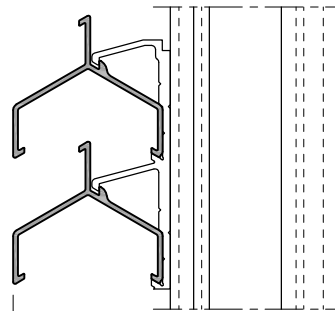
ST-033-V  
ST-0460



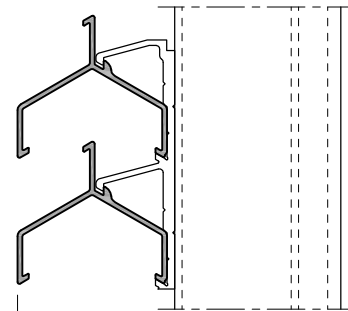
48.1



59.1

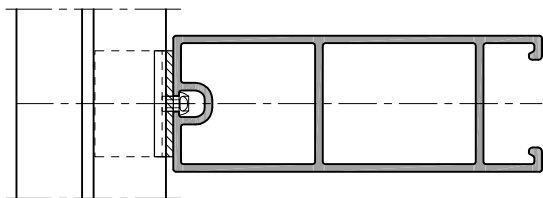


85.6

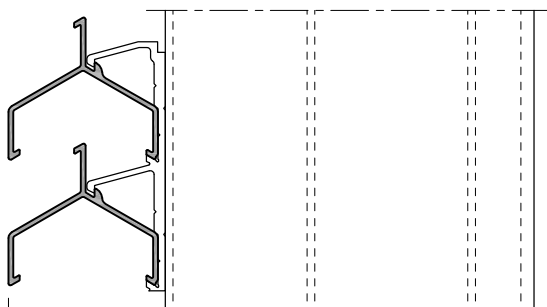
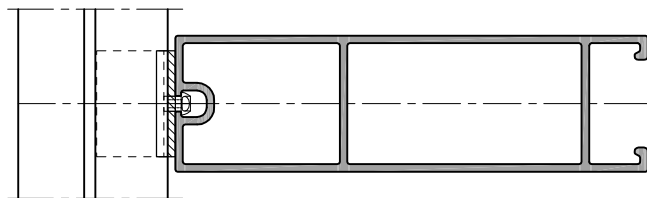


85.6

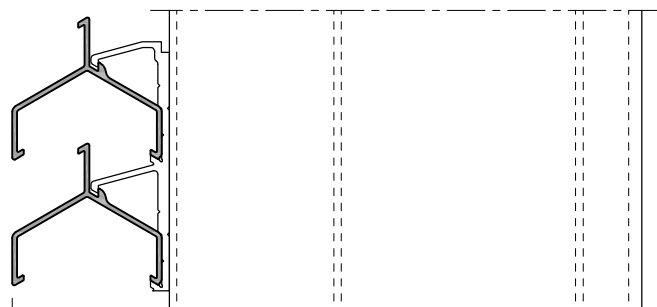
ST-033-V  
ST-0995



ST-033-V  
ST-1250



139.1



166.6

**STORAX**

Storax BV  
Wattstraat 1  
3335 LV Zwijndrecht  
Nederland

Tel. : +31 (0)78 303 09 00  
Fax : +31 (0)78 610 04 95  
E-mail: storax@storax.nl  
Website: www.storax.nl

Productgroep: Lamellenwand

Onderdeel : Lamel op dragerprofiel

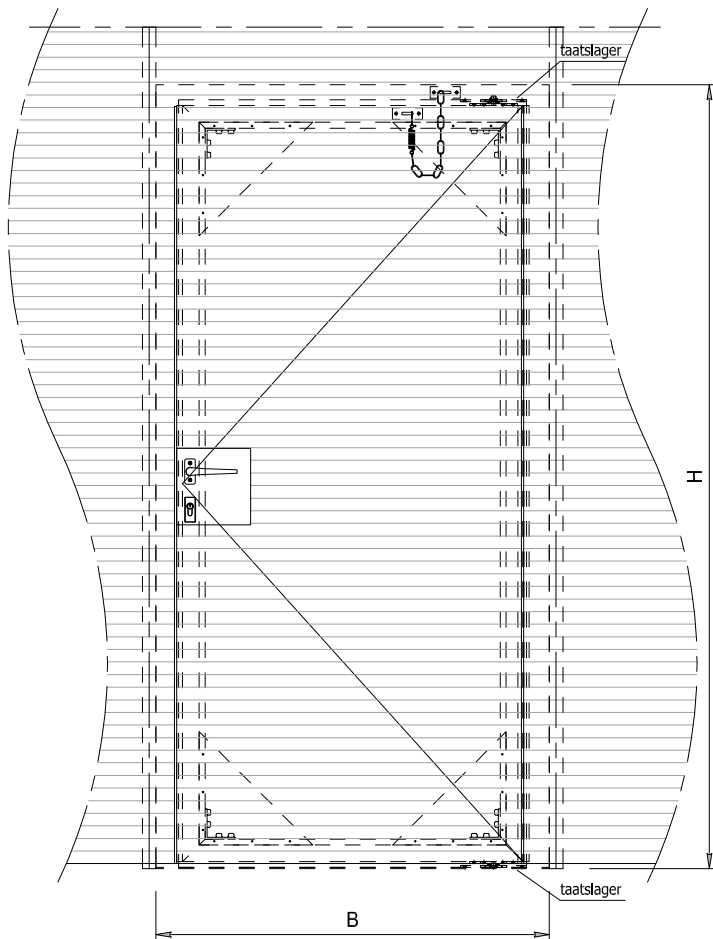
Materiaal : Aluminium

Schaal: 1:2

Datum: 01-06-2016

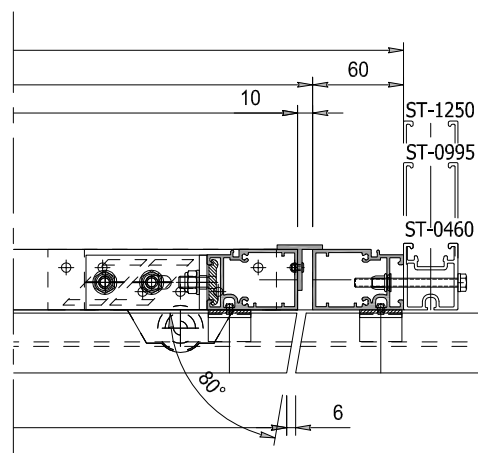
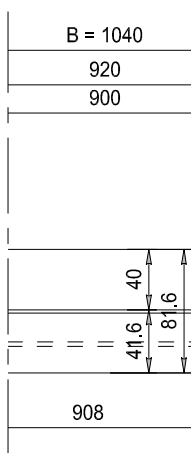
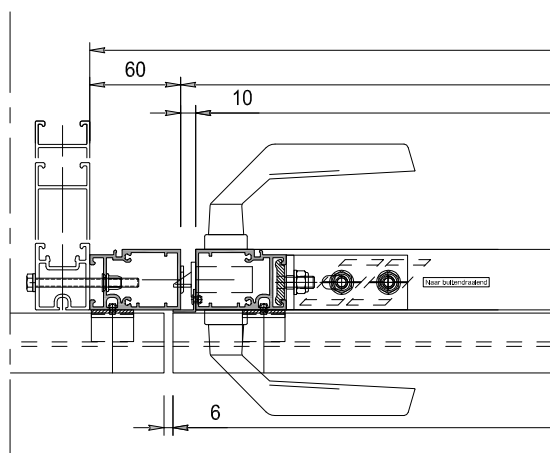
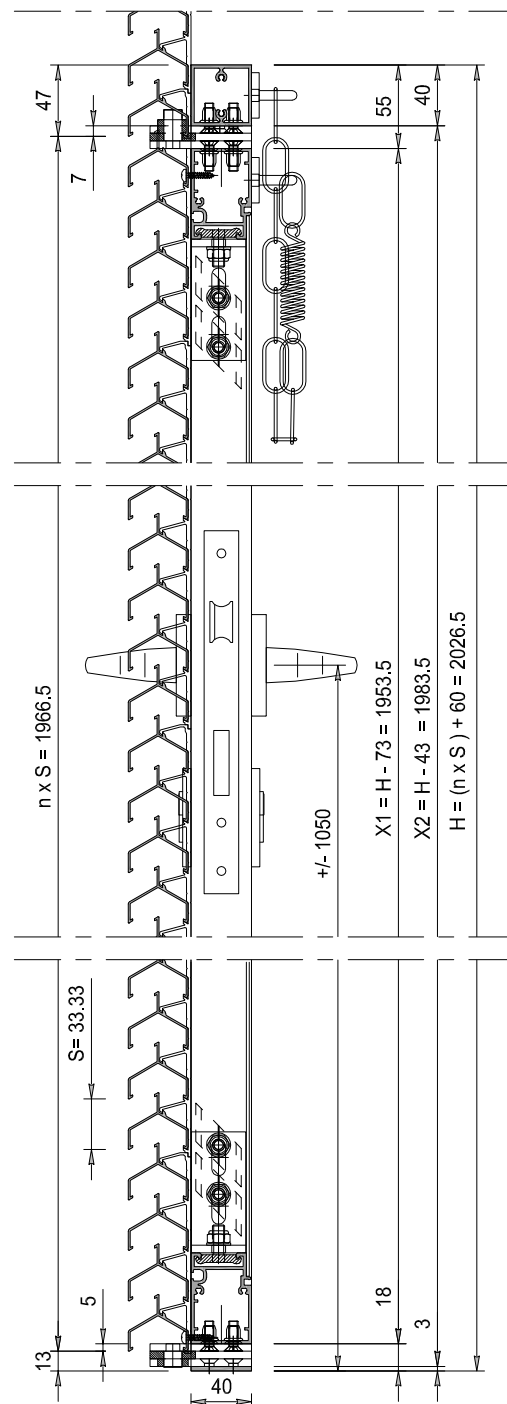
Blad:

033-V DR



Legenda  
H ; Hoogte totaal in mm  
B ; Breedte totaal in mm  
X1; Hoogte deurvleugel in mm  
X2; Nuttige opening hoogte in mm  
S ; Stap / Steek in mm  
n ; aantal lamellen op de deur

(B=1500 mm maximaal)  
(H=2700 mm maximaal)



**STORAX**

Storax BV  
Wattstraat 1  
3335 LV Zwijndrecht  
Nederland

Tel. : +31 (0)78 303 09 00  
Fax : +31 (0)78 610 04 95  
E-mail: storax@storax.nl  
Website: www.storax.nl

Productgroep: Lamellenwand

Onderdeel : Deur met lamel ST-033-V

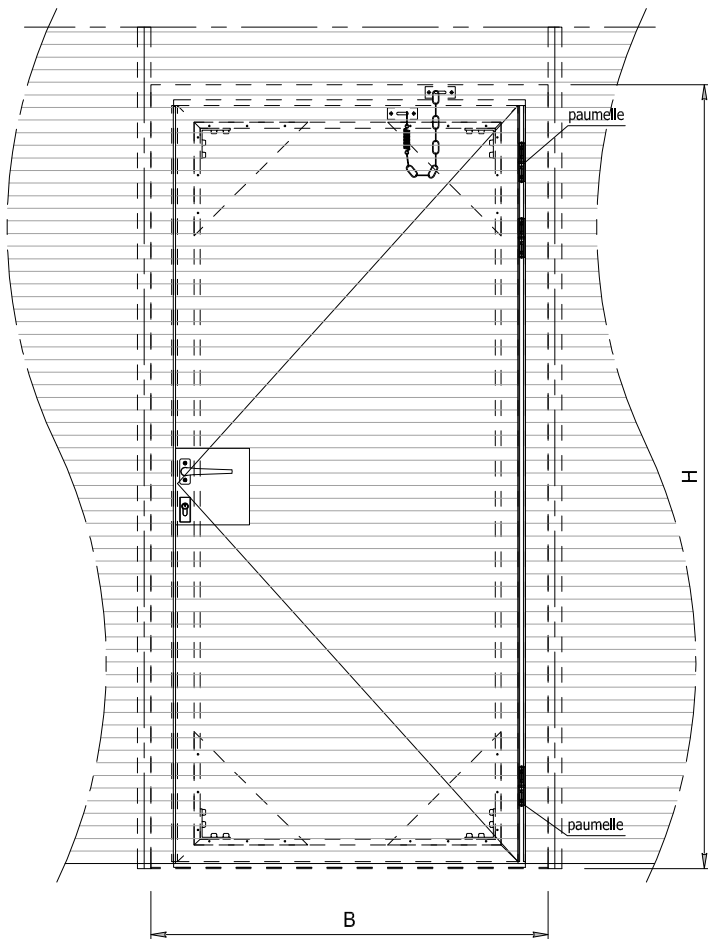
Materiaal : Aluminium

Schaal: 1:20 1:5

Datum: 01-06-2016

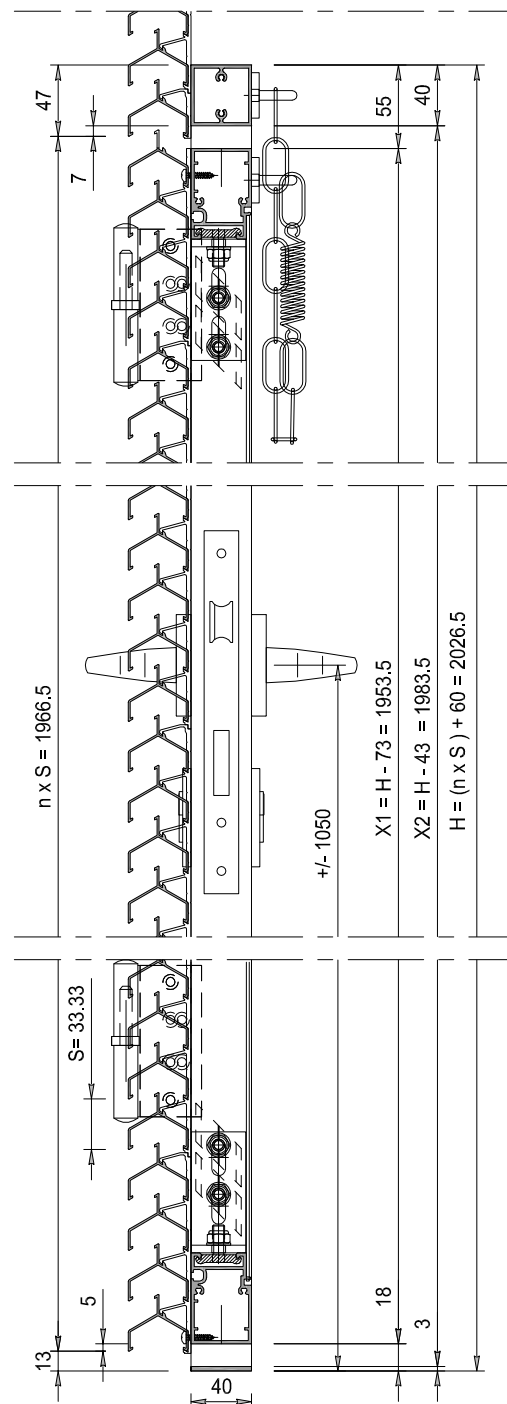
Blad:

**D-033-V**



Legenda  
H ; Hoogte totaal in mm  
B ; Breedte totaal in mm  
X1; Hoogte deurvleugel in mm  
X2; Nuttige opening hoogte in mm  
S ; Stap / Steek in mm  
n ; aantal lamellen op de deur

(B=1500 mm maximaal)  
(H=2700 mm maximaal)



$n \times S = 1966.5$

$S = 33.33$

13

5

40

18

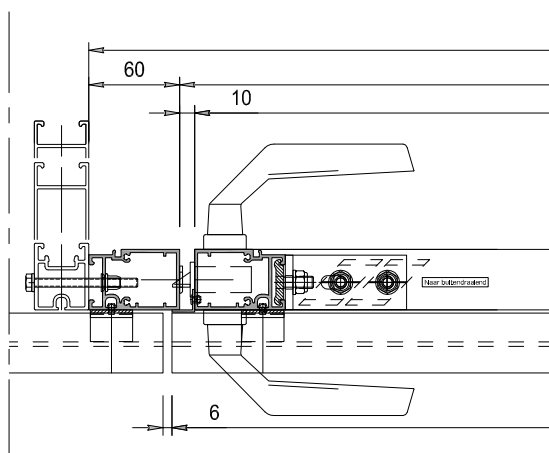
3

+/- 1050

$X1 = H - 73 = 1953.5$

$X2 = H - 43 = 1983.5$

$H = (n \times S) + 60 = 2026.5$

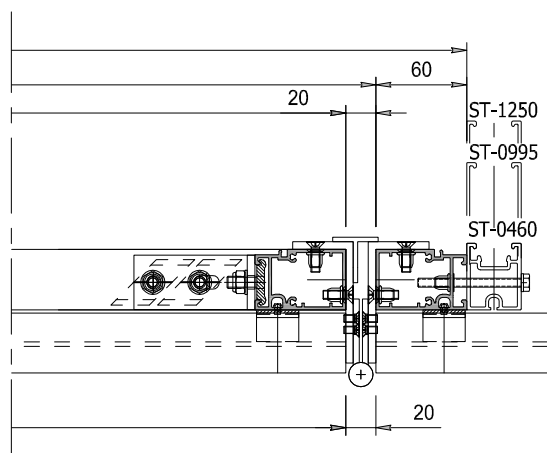


B = 1050

930  
900

41.6 40  
8 1.6

915



ST-1250

ST-0995

ST-0460

**STORAX**

Storax BV  
Wattstraat 1  
3335 LV Zwijndrecht  
Nederland

Tel. : +31 (0)78 303 09 00  
Fax : +31 (0)78 610 04 95  
E-mail: storax@storax.nl  
Website: www.storax.nl

Productgroep: Lamellenwand

Onderdeel : Deur met lamel ST-033-V

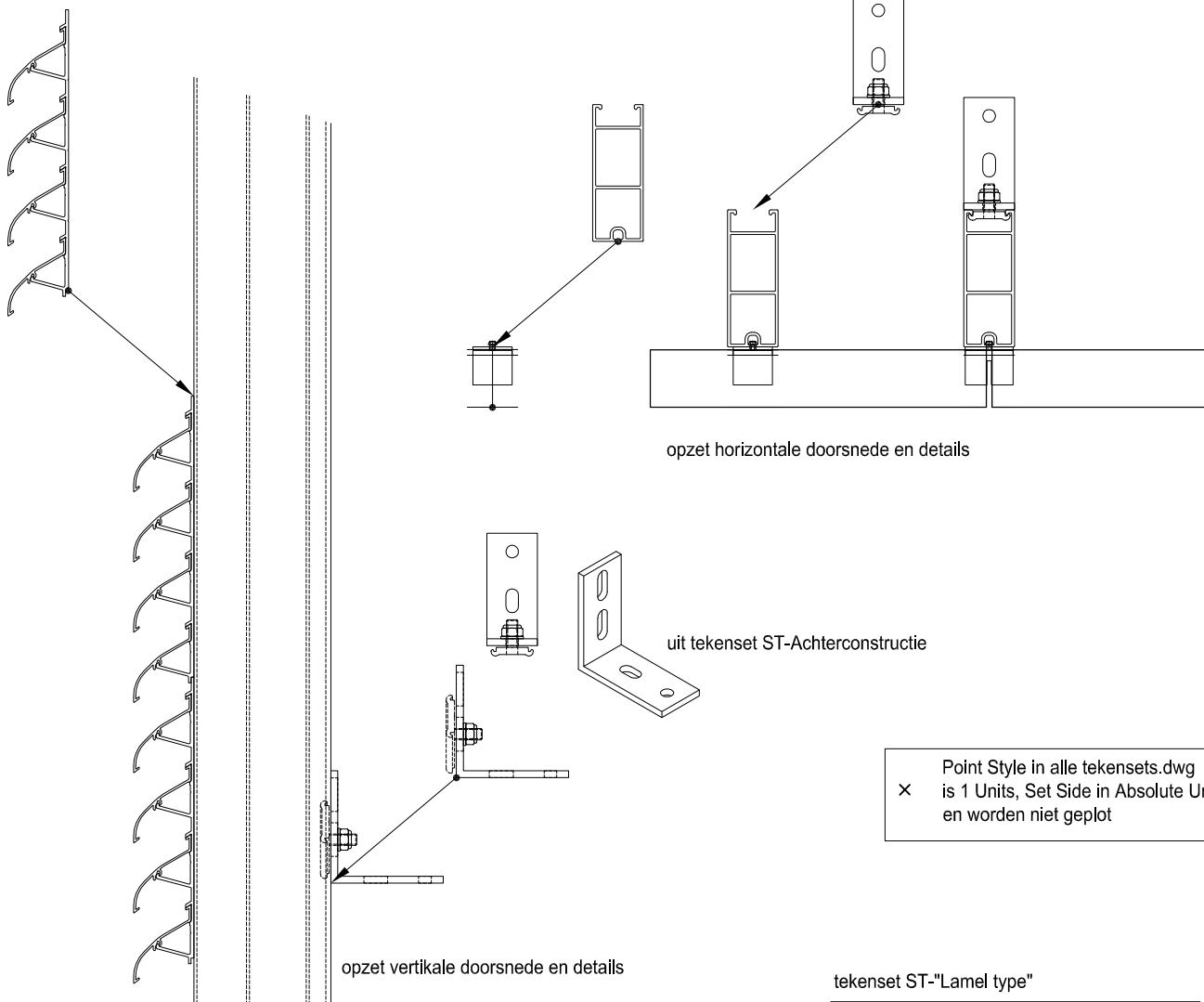
Materiaal : Aluminium

Schaal: 1:20 1:5

Datum: 01-06-2016

Blad:

**D-033-V'**



opzet horizontale doorsnede en details

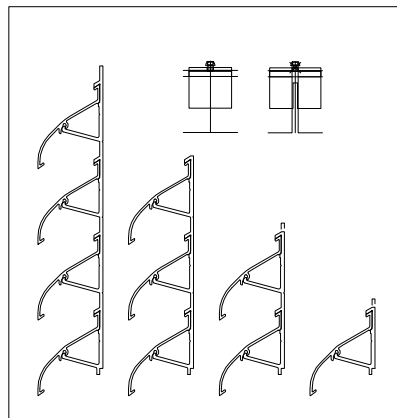
uit tekenset ST-Achterconstructie

opzet verticale doorsnede en details

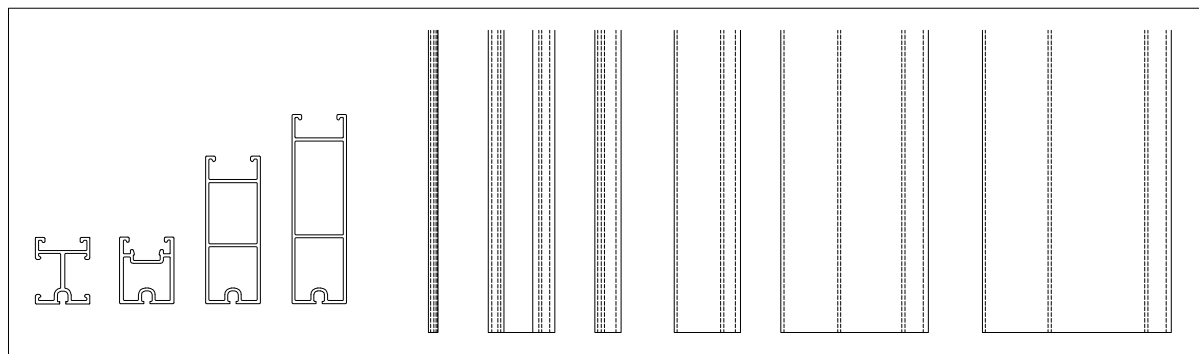
× Point Style in alle tekensets.dwg is 1 Units, Set Side in Absolute Units en worden niet geplot

Zie ook;  
Overzicht lamellen, zie tekening 01 en 02  
Overzicht dragers, deur en cassettekaders tek.03  
Overzicht bevestigings onderdelen, zie tekening 04  
Deuren in lamellenwand, zie tekening 05 t/m 11  
Cassettesysteem details, zie tekening 12

tekenset ST-"Lamel type"



tekenset ST-DRAAGPROFIEL



tekensets zijn in DWG formaat te downloaden



Storax BV  
Wattstraat 1  
3335 LV Zwijndrecht  
Nederland

Tel. : +31 (0)78 303 09 00  
Fax : +31 (0)78 610 04 95  
E-mail: storax@storax.nl  
Website: www.storax.nl

Productgroep: Lamellenwand

Onderdeel : Instructie gebruik tekensets in dwg

Materiaal : -

Schaal: -

Datum: 01-06-2016

Blad:

Instructie